

F2RL1 Antibody

Catalog No: #46560

Orders: order@signalwayantibody.comSupport: tech@signalwayantibody.com

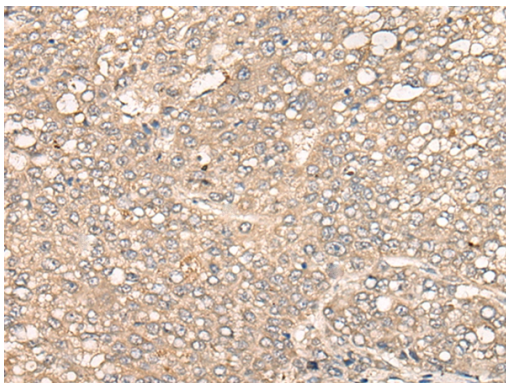
Description

Product Name	F2RL1 Antibody
Host Species	Rabbit
Clonality	Polyclonal
Purification	Antigen affinity purification
Applications	IHC
Species Reactivity	Hu
Specificity	The antibody detects endogenous levels of total F2RL1 protein.
Immunogen Type	peptide
Immunogen Description	Synthetic peptide corresponding to residues near the C terminal of human F2RL1
Target Name	F2RL1
Other Names	PAR2; GPR11
Accession No.	Swiss-Prot:P55085NCBI Gene ID:2150NCBI Protein:NP_005233
Uniprot	P55085
GeneID	2150;
Concentration	0.8mg/ml
Formulation	Rabbit IgG in pH7.4 PBS, 0.05% NaN ₃ , 40% Glycerol.
Storage	Store at -20°C

Application Details

Immunohistochemistry: 1: 25-100

Images



The image on the left is immunohistochemistry of paraffin-embedded Human liver cancer tissue using 46560(F2RL1 Antibody) at dilution 1/35, on the right is treated with synthetic peptide. (Original magnification: x200)

Background

Coagulation factor II (thrombin) receptor-like 1 (F2RL1) is a member of the large family of 7-transmembrane-region receptors that couple to guanosine-nucleotide-binding proteins. F2RL1 is also a member of the protease-activated receptor family. It is activated by trypsin, but not by thrombin. It is activated by proteolytic cleavage of its extracellular amino terminus. The new amino terminus functions as a tethered ligand and activates the receptor. The F2RL1 gene contains two exons and is widely expressed in human tissues. The predicted protein sequence is 83%

identical to the mouse receptor sequence.?

Note: This product is for in vitro research use only