

## FUT4 Antibody

Catalog No: #46565

Orders: [order@signalwayantibody.com](mailto:order@signalwayantibody.com)Support: [tech@signalwayantibody.com](mailto:tech@signalwayantibody.com)

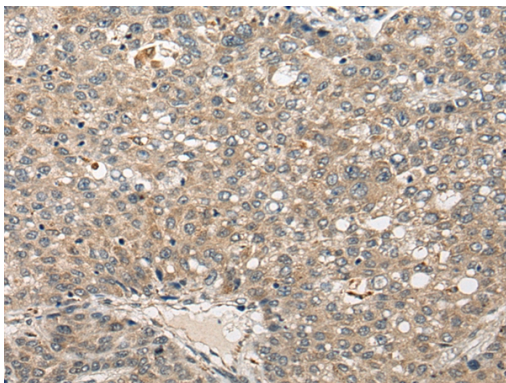
## Description

Product Name	FUT4 Antibody
Host Species	Rabbit
Clonality	Polyclonal
Purification	Antigen affinity purification
Applications	IHC
Species Reactivity	Hu
Specificity	The antibody detects endogenous levels of total FUT4 protein.
Immunogen Type	peptide
Immunogen Description	Synthetic peptide corresponding to residues near the C terminal of human FUT4
Target Name	FUT4
Other Names	LeX; CD15; ELFT; FCT3A; FUTIV; SSEA-1; FUC-TIV
Accession No.	Swiss-Prot:P22083 NCBI Gene ID:2526NCBI Protein:NP_002024
Uniprot	P22083
GeneID	2526;
Concentration	1.4mg/ml
Formulation	Rabbit IgG in pH7.4 PBS, 0.05% NaN <sub>3</sub> , 40% Glycerol.
Storage	Store at -20°C

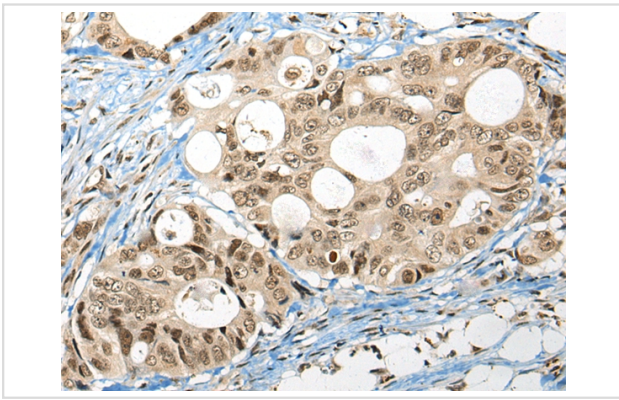
## Application Details

Immunohistochemistry: 1: 30-150

## Images



The image on the left is immunohistochemistry of paraffin-embedded Human liver cancer tissue using 46565(FUT4 Antibody) at dilution 1/40, on the right is treated with synthetic peptide. (Original magnification: x200)



The image on the left is immunohistochemistry of paraffin-embedded Human colorectal cancer tissue using 46565(FUT4 Antibody) at dilution 1/40, on the right is treated with synthetic peptide. (Original magnification: x200)

## Background

The product of this gene transfers fucose to N-acetyllactosamine polysaccharides to generate fucosylated carbohydrate structures. It catalyzes the synthesis of the non-sialylated antigen, Lewis x (CD15).?

Note: This product is for in vitro research use only