

HAUS2 Antibody

Catalog No: #46571

Orders: order@signalwayantibody.com

Support: tech@signalwayantibody.com

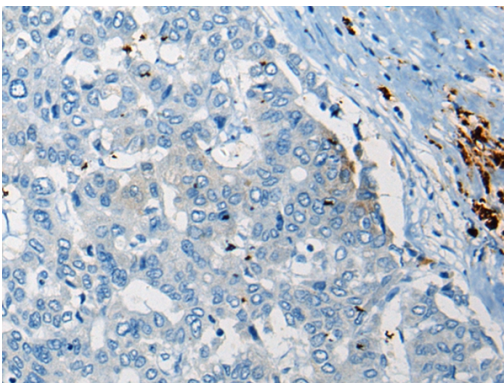
Description

Product Name	HAUS2 Antibody
Host Species	Rabbit
Clonality	Polyclonal
Purification	Antigen affinity purification
Applications	IHC
Species Reactivity	Hu
Specificity	The antibody detects endogenous levels of total HAUS2 protein.
Immunogen Type	peptide
Immunogen Description	Synthetic peptide corresponding to internal residues of human HAUS2
Target Name	HAUS2
Other Names	CEP27; C15orf25; HsT17025
Accession No.	Swiss-Prot:Q9NVX0 NCBI Gene ID:55142NCBI Protein:NP_060567
Uniprot	Q9NVX0
GeneID	55142;
Concentration	0.7mg/ml
Formulation	Rabbit IgG in pH7.4 PBS, 0.05% NaN ₃ , 40% Glycerol.
Storage	Store at -20°C

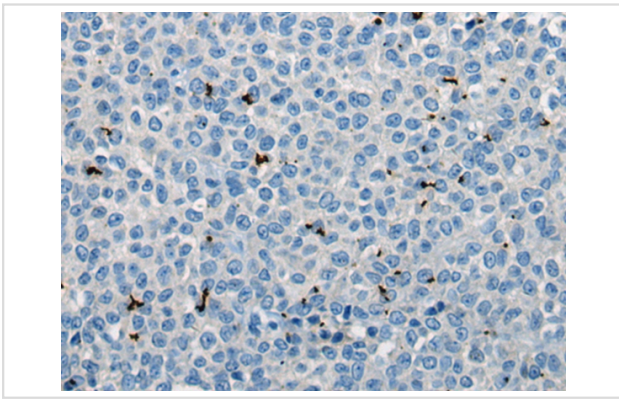
Application Details

Immunohistochemistry: 1: 10-50

Images



The image on the left is immunohistochemistry of paraffin-embedded Human liver cancer tissue using 46571 (HAUS2 Antibody) at dilution 1/20, on the right is treated with synthetic peptide. (Original magnification: x200)



The image on the left is immunohistochemistry of paraffin-embedded Human ovarian cancer tissue using 46571(HAUS2 Antibody) at dilution 1/20, on the right is treated with synthetic peptide. (Original magnification: x200)

Background

The protein encoded by this gene is a subunit of the augmin complex. The augmin complex plays a role in microtubule attachment to the kinetochore and central spindle formation.?

Note: This product is for in vitro research use only