

HIST1H1C Antibody

Catalog No: #46576

Orders: order@signalwayantibody.comSupport: tech@signalwayantibody.com

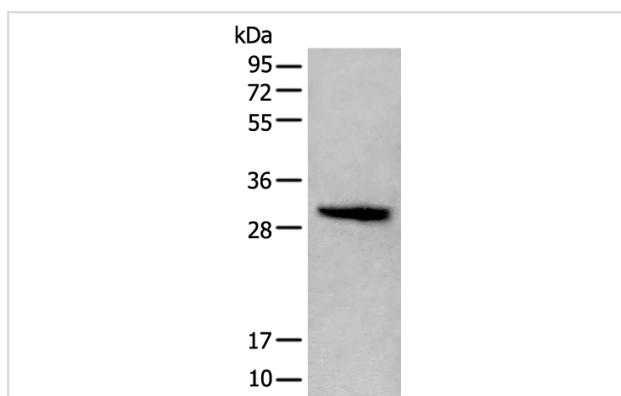
Description

Product Name	HIST1H1C Antibody
Host Species	Rabbit
Clonality	Polyclonal
Purification	Antigen affinity purification
Applications	WB
Species Reactivity	Hu
Specificity	The antibody detects endogenous levels of total HIST1H1C protein.
Immunogen Type	peptide
Immunogen Description	Full length fusion protein of human HIST1H1C
Target Name	HIST1H1C
Other Names	H1C; H1.2; H1F2; H1s-1
Accession No.	Swiss-Prot:P16403NCBI Gene ID:3006NCBI Protein:BC002649
Uniprot	P16403
GeneID	3006;
Calculated MW	21 kDa
Concentration	1.9mg/ml
Formulation	Rabbit IgG in pH7.4 PBS, 0.05% NaN ₃ , 40% Glycerol.
Storage	Store at -20°C

Application Details

Western blotting: 1:500-1:2000

Images



Gel: 12%SDS-PAGE
 lysate: 40 µg, Lane: Jurkat cell lysate,
 Primary antibody: 46576B (HIST1H1C Antibody) at dilution
 1/400
 Secondary antibody: Goat anti rabbit IgG at 1/8000 dilution,
 Exposure time: 1 second

Background

Histones are basic nuclear proteins responsible for nucleosome structure of the chromosomal fiber in eukaryotes. Two molecules of each of the four core histones (H2A, H2B, H3, and H4) form an octamer, around which approximately 146 bp of DNA is wrapped in repeating units, called

nucleosomes. The linker histone, H1, interacts with linker DNA between nucleosomes and functions in the compaction of chromatin into higher order structures. This gene is intronless and encodes a replication-dependent histone that is a member of the histone H1 family. Transcripts from this gene lack polyA tails but instead contain a palindromic termination element. This gene is found in the large histone gene cluster on chromosome 6.

Note: This product is for in vitro research use only