

## HTRA1 Antibody

Catalog No: #46582

Orders: order@signalwayantibody.com

Support: tech@signalwayantibody.com

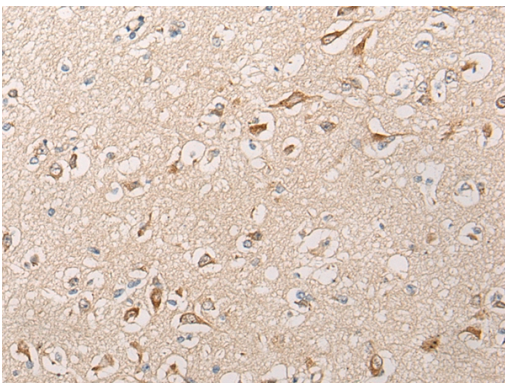
## Description

Product Name	HTRA1 Antibody
Host Species	Rabbit
Clonality	Polyclonal
Purification	Antigen affinity purification
Applications	IHC
Species Reactivity	Hu Rt
Specificity	The antibody detects endogenous levels of total HTRA1 protein.
Immunogen Type	peptide
Immunogen Description	Synthetic peptide corresponding to internal residues of human HTRA1
Target Name	HTRA1
Other Names	L56; HtrA; ARMD7; ORF480; PRSS11; CARASIL; CADASIL2
Accession No.	Swiss-Prot:Q92743NCBI Gene ID:5654NCBI Protein:NP_002766
Uniprot	Q92743
GeneID	5654;
Concentration	0.7mg/ml
Formulation	Rabbit IgG in pH7.4 PBS, 0.05% NaN <sub>3</sub> , 40% Glycerol.
Storage	Store at -20°C

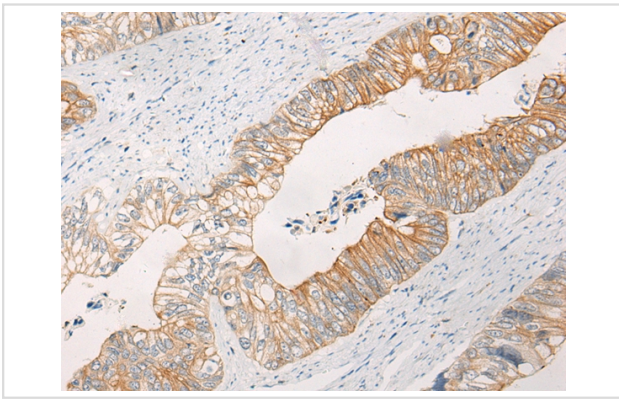
## Application Details

Immunohistochemistry: 1: 20-100

## Images



The image on the left is immunohistochemistry of paraffin-embedded Human brain tissue using 46582(HTRA1 Antibody) at dilution 1/30, on the right is treated with synthetic peptide. (Original magnification: x200)



The image on the left is immunohistochemistry of paraffin-embedded Human colorectal cancer tissue using 46582(HTRA1 Antibody) at dilution 1/30, on the right is treated with synthetic peptide. (Original magnification: x200)

## Background

This gene encodes a member of the trypsin family of serine proteases. This protein is a secreted enzyme that is proposed to regulate the availability of insulin-like growth factors (IGFs) by cleaving IGF-binding proteins. It has also been suggested to be a regulator of cell growth. Variations in the promoter region of this gene are the cause of susceptibility to age-related macular degeneration type 7.?

Note: This product is for in vitro research use only