

## IER3 Antibody

Catalog No: #46585

Orders: [order@signalwayantibody.com](mailto:order@signalwayantibody.com)Support: [tech@signalwayantibody.com](mailto:tech@signalwayantibody.com)

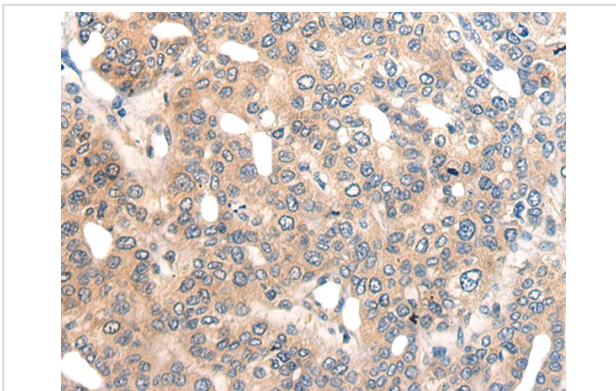
## Description

Product Name	IER3 Antibody
Host Species	Rabbit
Clonality	Polyclonal
Purification	Antigen affinity purification
Applications	IHC
Species Reactivity	Hu
Specificity	The antibody detects endogenous levels of total IER3 protein.
Immunogen Type	peptide
Immunogen Description	Synthetic peptide corresponding to internal residues of human IER3
Target Name	IER3
Other Names	DIF2; IEX1; PRG1; DIF-2; GLY96; IEX-1; IEX-1L
Accession No.	Swiss-Prot:P46695 NCBI Gene ID:8870NCBI Protein:NP_003888
Uniprot	P46695
GeneID	8870;
Concentration	1.4mg/ml
Formulation	Rabbit IgG in pH7.4 PBS, 0.05% NaN <sub>3</sub> , 40% Glycerol.
Storage	Store at -20°C

## Application Details

Immunohistochemistry: 1: 25-100

## Images



The image on the left is immunohistochemistry of paraffin-embedded Human liver cancer tissue using 46585(IER3 Antibody) at dilution 1/35, on the right is treated with synthetic peptide. (Original magnification: x200)

## Background

This gene functions in the protection of cells from Fas- or tumor necrosis factor type alpha-induced apoptosis. Partially degraded and unspliced transcripts are found after virus infection in vitro, but these transcripts are not found in vivo and do not generate a valid protein.?

---

Note: This product is for in vitro research use only