

KMT2C Antibody

Catalog No: #46594

Orders: order@signalwayantibody.comSupport: tech@signalwayantibody.com

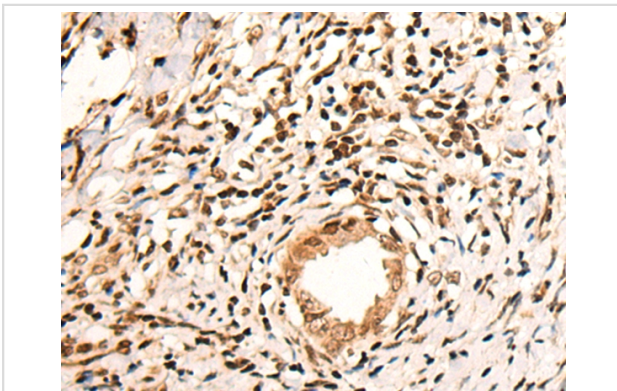
Description

Product Name	KMT2C Antibody
Host Species	Rabbit
Clonality	Polyclonal
Purification	Antigen affinity purification
Applications	IHC
Species Reactivity	Hu
Specificity	The antibody detects endogenous levels of total KMT2C protein.
Immunogen Type	peptide
Immunogen Description	Synthetic peptide corresponding to internal residues of human KMT2C
Target Name	KMT2C
Other Names	HALR; MLL3
Accession No.	Swiss-Prot:Q8NEZ4NCBI Gene ID:58508NCBI Protein:NP_733751
Uniprot	Q8NEZ4
GeneID	58508;
Concentration	0.7mg/ml
Formulation	Rabbit IgG in pH7.4 PBS, 0.05% NaN ₃ , 40% Glycerol.
Storage	Store at -20°C

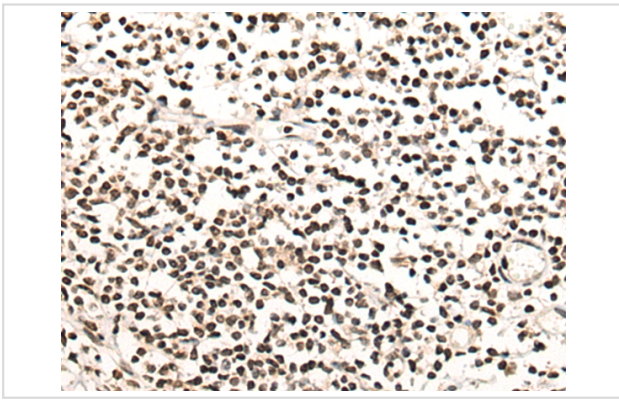
Application Details

Immunohistochemistry: 1: 20-100

Images



The image on the left is immunohistochemistry of paraffin-embedded Human cervical cancer tissue using 46594(KMT2C Antibody) at dilution 1/30, on the right is treated with synthetic peptide. (Original magnification: x200)



The image on the left is immunohistochemistry of paraffin-embedded Human tonsil tissue using 46594(KMT2C Antibody) at dilution 1/30, on the right is treated with synthetic peptide. (Original magnification: x200)

Background

This gene is a member of the myeloid/lymphoid or mixed-lineage leukemia (MLL) family and encodes a nuclear protein with an AT hook DNA-binding domain, a DHHC-type zinc finger, six PHD-type zinc fingers, a SET domain, a post-SET domain and a RING-type zinc finger. This protein is a member of the ASC-2/NCOA6 complex (ASCOM), which possesses histone methylation activity and is involved in transcriptional coactivation.

Note: This product is for in vitro research use only