

LDAH Antibody

Catalog No: #46596

Orders: order@signalwayantibody.com

Support: tech@signalwayantibody.com

Description

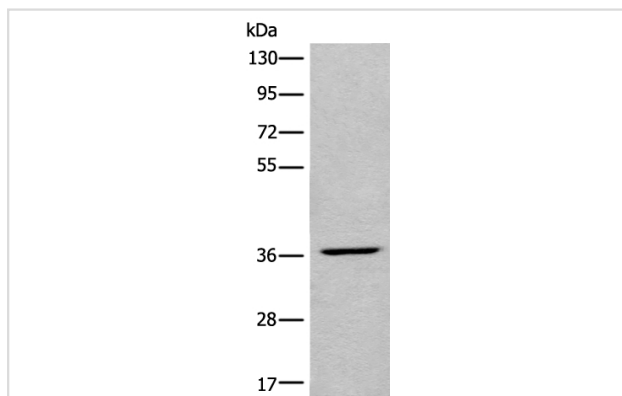
Product Name	LDAH Antibody
Host Species	Rabbit
Clonality	Polyclonal
Purification	Antigen affinity purification
Applications	WB IHC
Species Reactivity	Hu
Specificity	The antibody detects endogenous levels of total LDAH protein.
Immunogen Type	peptide
Immunogen Description	Synthetic peptide corresponding to residues near the C terminal of human LDAH
Target Name	LDAH
Other Names	hLDAH; C2orf43
Accession No.	Swiss-Prot:Q9H6V9 NCBI Gene ID:60526NCBI Protein:NP_068744
Uniprot	Q9H6V9
GeneID	60526;
Calculated MW	37 kDa
Concentration	1.6mg/ml
Formulation	Rabbit IgG in pH7.4 PBS, 0.05% NaN ₃ , 40% Glycerol.
Storage	Store at -20°C

Application Details

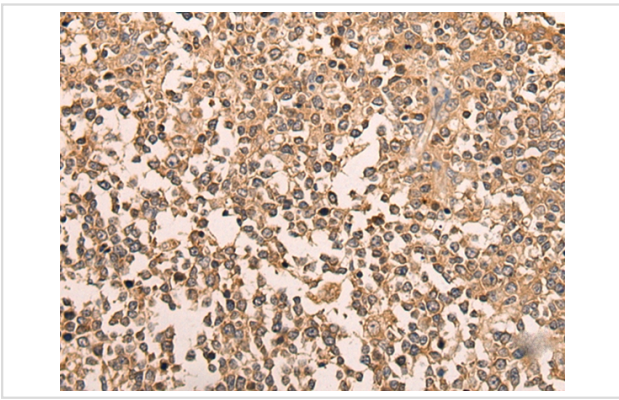
Western blotting: 1:500-1:2000

Immunohistochemistry: 1: 50-300

Images



Gel: 8%SDS-PAGE
lysate: 40 µg, Lane: HEPG2 cell lysate,
Primary antibody: 46596B (LDAH Antibody) at dilution 1/650
dilution,
Secondary antibody: Goat anti rabbit IgG at 1/8000 dilution,
Exposure time: 3 seconds



The image on the left is immunohistochemistry of paraffin-embedded Human tonsil tissue using 46596(LDAH Antibody) at dilution 1/70, on the right is treated with synthetic peptide. (Original magnification: x200)

Background

Serine lipid hydrolase associated with lipid droplets. Highly expressed in macrophage-rich areas in atherosclerotic lesions, suggesting that it could promote cholesterol ester turnover in macrophages.

Note: This product is for in vitro research use only