

LPAR6 Antibody

Catalog No: #46598

Orders: order@signalwayantibody.com

Support: tech@signalwayantibody.com

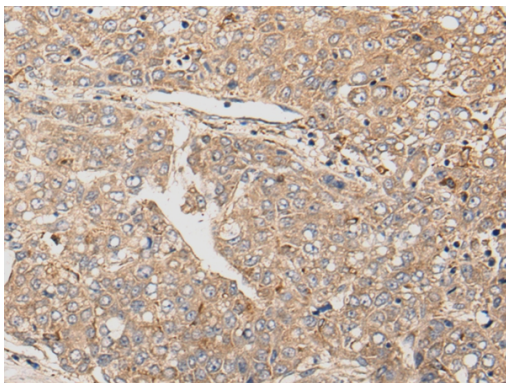
Description

Product Name	LPAR6 Antibody
Host Species	Rabbit
Clonality	Polyclonal
Purification	Antigen affinity purification
Applications	IHC
Species Reactivity	Hu
Specificity	The antibody detects endogenous levels of total LPAR6 protein.
Immunogen Type	peptide
Immunogen Description	Synthetic peptide corresponding to residues near the C terminal of human LPAR6
Target Name	LPAR6
Other Names	LAH3; P2Y5; ARWH1; HYPT8; P2RY5
Accession No.	Swiss-Prot:P43657NCBI Gene ID:10161NCBI Protein:NP_001155969
Uniprot	P43657
GeneID	10161;
Concentration	0.8mg/ml
Formulation	Rabbit IgG in pH7.4 PBS, 0.05% NaN ₃ , 40% Glycerol.
Storage	Store at -20°C

Application Details

Immunohistochemistry: 1: 25-100

Images



The image on the left is immunohistochemistry of paraffin-embedded Human liver cancer tissue using 46598(LPAR6 Antibody) at dilution 1/35, on the right is treated with synthetic peptide. (Original magnification: x200)

Background

The protein encoded by this gene belongs to the family of G-protein coupled receptors, that are preferentially activated by adenosine and uridine nucleotides. This gene aligns with an internal intron of the retinoblastoma susceptibility gene in the reverse orientation. Alternative splicing results in multiple transcript variants.

Note: This product is for in vitro research use only