

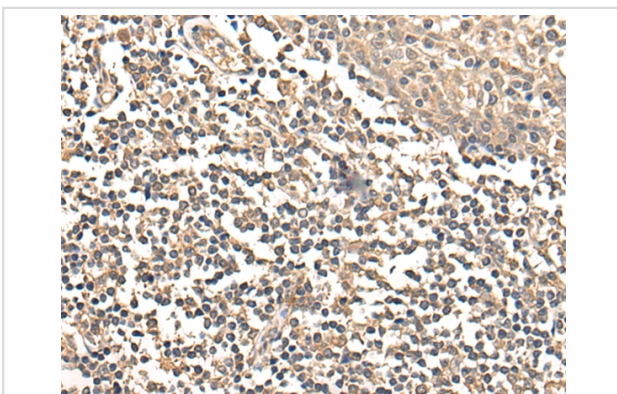
Description

Product Name	LPL Antibody
Host Species	Rabbit
Clonality	Polyclonal
Purification	Antigen affinity purification
Applications	IHC
Species Reactivity	Hu
Specificity	The antibody detects endogenous levels of total LPL protein.
Immunogen Type	peptide
Immunogen Description	Synthetic peptide corresponding to residues near the C terminal of human LPL
Target Name	LPL
Other Names	LIPD; HDLCQ11
Accession No.	Swiss-Prot:P06858NCBI Gene ID:4023NCBI Protein:NP_000228
Uniprot	P06858
GeneID	4023;
Concentration	1.4mg/ml
Formulation	Rabbit IgG in pH7.4 PBS, 0.05% NaN ₃ , 40% Glycerol.
Storage	Store at -20°C

Application Details

Immunohistochemistry: 1: 25-100

Images



The image on the left is immunohistochemistry of paraffin-embedded Human tonsil tissue using 46599(LPL Antibody) at dilution 1/25, on the right is treated with synthetic peptide. (Original magnification: x200)

Background

LPL encodes lipoprotein lipase, which is expressed in heart, muscle, and adipose tissue. LPL functions as a homodimer, and has the dual functions of triglyceride hydrolase and ligand/bridging factor for receptor-mediated lipoprotein uptake. Severe mutations that cause LPL deficiency result in type I hyperlipoproteinemia, while less extreme mutations in LPL are linked to many disorders of lipoprotein metabolism.?

Note: This product is for in vitro research use only