

## M1AP Antibody

Catalog No: #46602

Orders: [order@signalwayantibody.com](mailto:order@signalwayantibody.com)Support: [tech@signalwayantibody.com](mailto:tech@signalwayantibody.com)

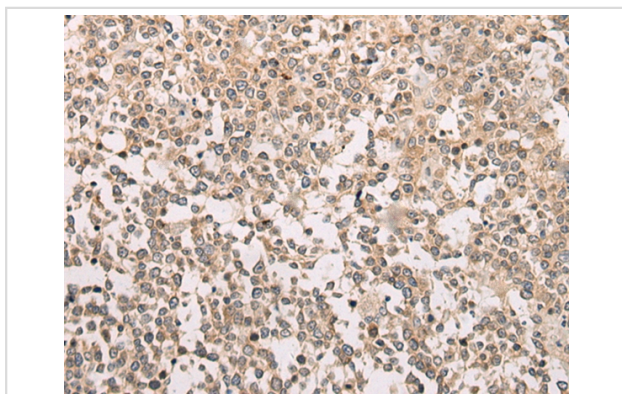
## Description

Product Name	M1AP Antibody
Host Species	Rabbit
Clonality	Polyclonal
Purification	Antigen affinity purification
Applications	IHC
Species Reactivity	Hu
Specificity	The antibody detects endogenous levels of total M1AP protein.
Immunogen Type	peptide
Immunogen Description	Synthetic peptide corresponding to internal residues of human M1AP
Target Name	M1AP
Other Names	D6Mm5e; C2orf65; SPATA37
Accession No.	Swiss-Prot:Q8TC57 NCBI Gene ID:130951NCBI Protein:NP_620159
Uniprot	Q8TC57
GeneID	130951;
Concentration	1.9mg/ml
Formulation	Rabbit IgG in pH7.4 PBS, 0.05% NaN <sub>3</sub> , 40% Glycerol.
Storage	Store at -20°C

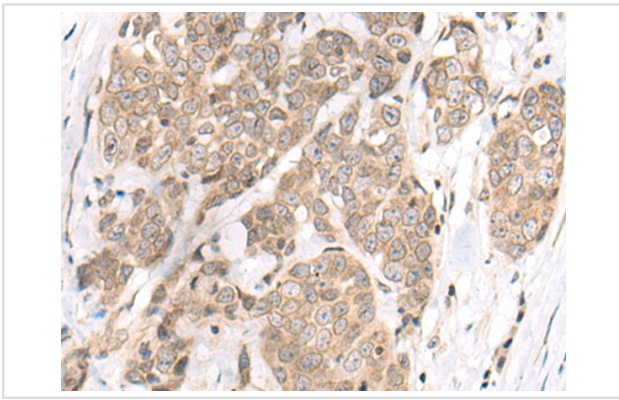
## Application Details

Immunohistochemistry: 1: 50-300

## Images



The image on the left is immunohistochemistry of paraffin-embedded Human tonsil tissue using 46602(M1AP Antibody) at dilution 1/80, on the right is treated with synthetic peptide. (Original magnification: x200)



The image on the left is immunohistochemistry of paraffin-embedded Human thyroid cancer tissue using 46602(M1AP Antibody) at dilution 1/80, on the right is treated with synthetic peptide. (Original magnification: x200)

## Background

This gene encodes a protein that is likely to function in progression of meiosis. A similar protein in mouse plays a role in gametogenesis in both sexes. Alternate splicing results in multiple transcript variants encoding different isoforms.

Note: This product is for in vitro research use only