

MAP1LC3B Antibody

Catalog No: #46604

Orders: order@signalwayantibody.com

Support: tech@signalwayantibody.com

Description

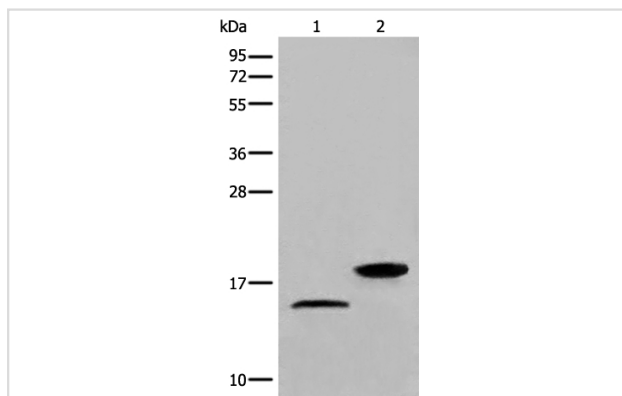
Product Name	MAP1LC3B Antibody
Host Species	Rabbit
Clonality	Polyclonal
Purification	Antigen affinity purification
Applications	WB IHC
Species Reactivity	Hu Ms Rt
Specificity	The antibody detects endogenous levels of total MAP1LC3B protein.
Immunogen Type	peptide
Immunogen Description	Synthetic peptide corresponding to residues near the N terminal of human MAP1LC3B
Target Name	MAP1LC3B
Other Names	LC3B; ATG8F; MAP1LC3B-a; MAP1A/1BLC3
Accession No.	Swiss-Prot:Q9GZQ8NCBI Gene ID:81631NCBI Protein:NP_073729
Uniprot	Q9GZQ8
GeneID	81631;
Calculated MW	15 kDa
Concentration	0.9mg/ml
Formulation	Rabbit IgG in pH7.4 PBS, 0.05% NaN ₃ , 40% Glycerol.
Storage	Store at -20°C

Application Details

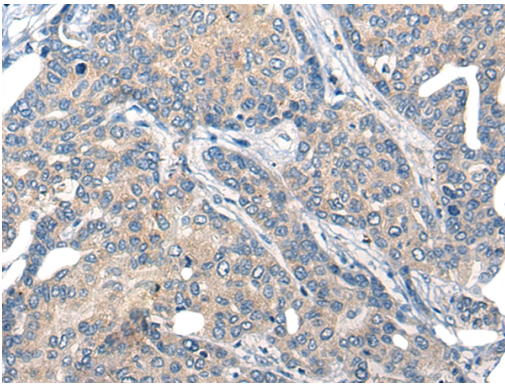
Western blotting: 1:200-1:1000

Immunohistochemistry: 1: 20-100

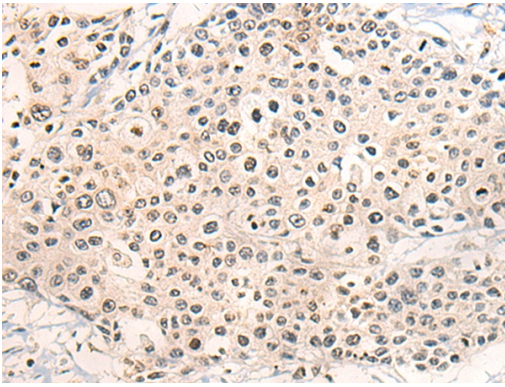
Images



Gel: 12%SDS-PAGE
lysate: 40 µg, Lane 1-2: HEPG2 cell and Human fetal brain tissue lysates,
Primary antibody: 46604B (MAP1LC3B Antibody) at dilution 1/300
Secondary antibody: Goat anti rabbit IgG at 1/8000 dilution,
Exposure time: 5 seconds



The image on the left is immunohistochemistry of paraffin-embedded Human liver cancer tissue using 46604(MAP1LC3B Antibody) at dilution 1/25, on the right is treated with synthetic peptide. (Original magnification: x200)



The image on the left is immunohistochemistry of paraffin-embedded Human prostate cancer tissue using 46604(MAP1LC3B Antibody) at dilution 1/25, on the right is treated with synthetic peptide. (Original magnification: x200)

Background

The product of this gene is a subunit of neuronal microtubule-associated MAP1A and MAP1B proteins, which are involved in microtubule assembly and important for neurogenesis. Studies on the rat homolog implicate a role for this gene in autophagy, a process that involves the bulk degradation of cytoplasmic component.

Note: This product is for in vitro research use only