

MARCH2 Antibody

Catalog No: #46606

Orders: order@signalwayantibody.comSupport: tech@signalwayantibody.com

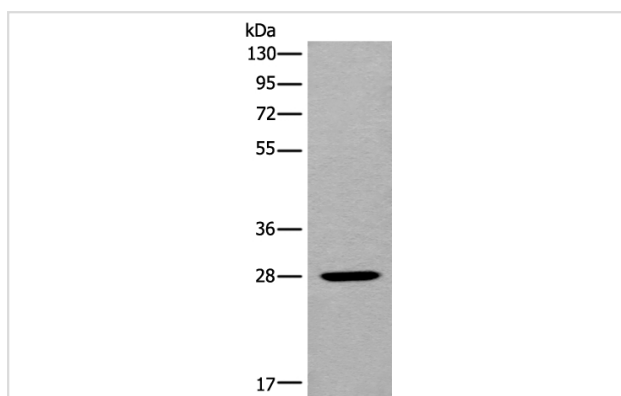
Description

Product Name	MARCH2 Antibody
Host Species	Rabbit
Clonality	Polyclonal
Purification	Antigen affinity purification
Applications	WB
Species Reactivity	Hu
Specificity	The antibody detects endogenous levels of total MARCH2 protein.
Immunogen Type	peptide
Immunogen Description	Full length fusion protein of human 42796
Target Name	2-Mar
Other Names	RNF172; HSPC240; MARCH-II
Accession No.	Swiss-Prot:Q9P0N8NCBI Gene ID:51257NCBI Protein:BC111388
Uniprot	Q9P0N8
GeneID	51257;
Calculated MW	27 kDa
Concentration	0.7mg/ml
Formulation	Rabbit IgG in pH7.4 PBS, 0.05% NaN ₃ , 40% Glycerol.
Storage	Store at -20°C

Application Details

Western blotting: 1:200-1:1000

Images



Gel: 8%SDS-PAGE

lysate: 40 µg, Lane: Human fetal liver tissue

Primary antibody: 46606B (MARCH2 Antibody) at dilution 1/250

Secondary antibody: Goat anti rabbit IgG at 1/8000 dilution, Exposure time: 30 seconds

Background

Ubiquitination is an important mechanism through which three classes of enzymes act in concert to target short-lived or abnormal proteins for destruction. The three classes of enzymes involved in ubiquitination are the ubiquitin-activating enzymes (E1s), the ubiquitin-conjugating enzymes

(E2s) and the ubiquitin-protein ligases (E3s). MARCH2 (membrane-associated ring finger (C3HC4) 2), also known as RNF172 or HSPC240, is a 246 amino acid multi-pass membrane protein that localizes to the endoplasmic reticulum and contains one RING-CH-type zinc finger. Expressed in a variety of tissues, MARCH2 functions as an E3 ubiquitin-protein ligase that is thought to mediate the ubiquitination and subsequent degradation of CD71 and B7-2 and may be involved in endosomal protein trafficking.

Note: This product is for in vitro research use only