

MARK2 Antibody

Catalog No: #46607

Orders: order@signalwayantibody.comSupport: tech@signalwayantibody.com

Description

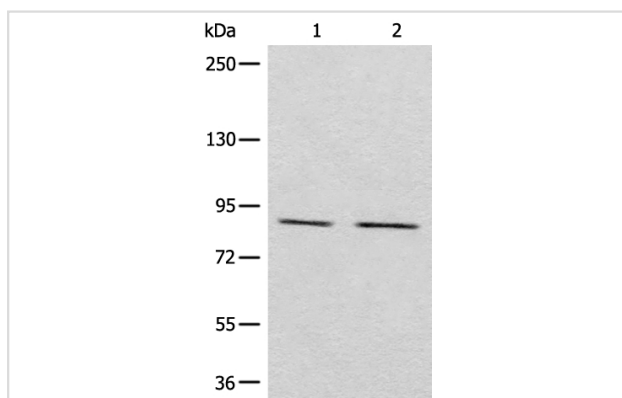
Product Name	MARK2 Antibody
Host Species	Rabbit
Clonality	Polyclonal
Purification	Antigen affinity purification
Applications	WB IHC
Species Reactivity	Hu
Specificity	The antibody detects endogenous levels of total MARK2 protein.
Immunogen Type	peptide
Immunogen Description	Synthetic peptide corresponding to internal residues of human MARK2
Target Name	MARK2
Other Names	EMK1; EMK-1; PAR-1; Par1b; Par-1b
Accession No.	Swiss-Prot:Q7KZI7NCBI Gene ID:2011NCBI Protein:NP_001034558
Uniprot	Q7KZI7
GeneID	2011;
Calculated MW	88 kDa
Concentration	1.5mg/ml
Formulation	Rabbit IgG in pH7.4 PBS, 0.05% NaN ₃ , 40% Glycerol.
Storage	Store at -20°C

Application Details

Western blotting: 1:500-1:2000

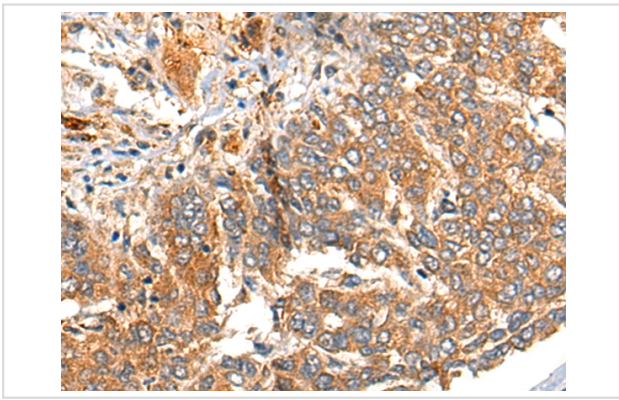
Immunohistochemistry: 1: 25-100

Images



Gel: 6%SDS-PAGE

lysate: 40 µg, Lane 1-2: Raji and A431 cell lysates,
Primary antibody: 46607 (MARK2 Antibody) at dilution
1/800Secondary antibody: Goat anti rabbit IgG at 1/8000 dilution,
Exposure time: 1 minute



The image on the left is immunohistochemistry of paraffin-embedded Human liver cancer tissue using 46607(MARK2 Antibody) at dilution 1/35, on the right is treated with synthetic peptide. (Original magnification: x200)

Background

This gene encodes a member of the Par-1 family of serine/threonine protein kinases. The protein is an important regulator of cell polarity in epithelial and neuronal cells, and also controls the stability of microtubules through phosphorylation and inactivation of several microtubule-associating proteins. The protein localizes to cell membranes. Multiple transcript variants encoding different isoforms have been found for this gene.

Note: This product is for in vitro research use only