

MBD2 Antibody

Catalog No: #46609

Orders: order@signalwayantibody.com

Support: tech@signalwayantibody.com

Description

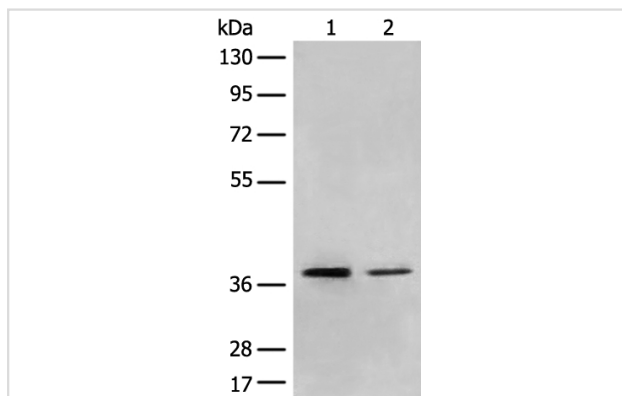
| | |
|-----------------------|--|
| Product Name | MBD2 Antibody |
| Host Species | Rabbit |
| Clonality | Polyclonal |
| Purification | Antigen affinity purification |
| Applications | WB IHC |
| Species Reactivity | Hu Ms |
| Specificity | The antibody detects endogenous levels of total MBD2 protein. |
| Immunogen Type | peptide |
| Immunogen Description | Synthetic peptide corresponding to internal residues of human MBD2 |
| Target Name | MBD2 |
| Other Names | DMTase; NY-CO-41 |
| Accession No. | Swiss-Prot:Q9UBB5 NCBI Gene ID:8932NCBI Protein:NP_003918 |
| Uniprot | Q9UBB5 |
| GeneID | 8932; |
| Calculated MW | 43 kDa |
| Concentration | 1.1mg/ml |
| Formulation | Rabbit IgG in pH7.4 PBS, 0.05% NaN ₃ , 40% Glycerol. |
| Storage | Store at -20°C |

Application Details

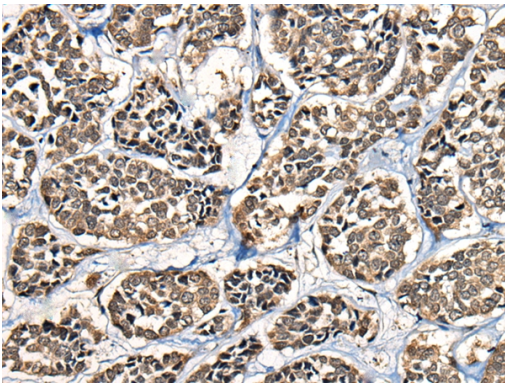
Western blotting: 1:200-1:1000

Immunohistochemistry: 1: 30-150

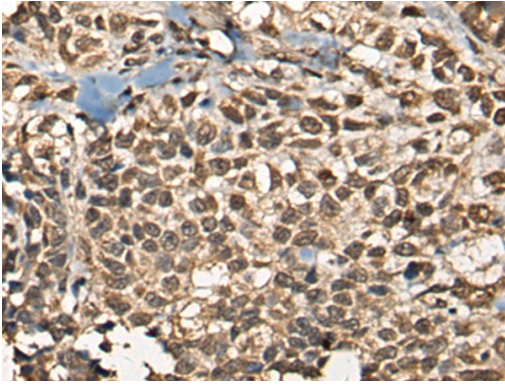
Images



Gel: 8%SDS-PAGE
 lysate: 40 µg, Lane 1-2: Human cerebrum tissue and
 Mouse brain tissue lysates,
 Primary antibody: 46609B (MBD2 Antibody) at dilution
 1/300
 Secondary antibody: Goat anti rabbit IgG at 1/8000 dilution,
 Exposure time: 10 minutes



The image on the left is immunohistochemistry of paraffin-embedded Human esophagus cancer tissue using 46609(MBD2 Antibody) at dilution 1/30, on the right is treated with synthetic peptide. (Original magnification: x200)



The image on the left is immunohistochemistry of paraffin-embedded Human ovarian cancer tissue using 46609(MBD2 Antibody) at dilution 1/30, on the right is treated with synthetic peptide. (Original magnification: x200)

Background

DNA methylation is the major modification of eukaryotic genomes and plays an essential role in mammalian development. Human proteins MECP2, MBD1, MBD2, MBD3, and MBD4 comprise a family of nuclear proteins related by the presence in each of a methyl-CpG binding domain (MBD). Each of these proteins, with the exception of MBD3, is capable of binding specifically to methylated DNA. MECP2, MBD1 and MBD2 can also repress transcription from methylated gene promoters. The protein encoded by this gene may function as a mediator of the biological consequences of the methylation signal. It is also reported that the this protein functions as a demethylase to activate transcription, as DNA methylation causes gene silencing. Two transcript variants encoding different isoforms have been found for this gene.?

Note: This product is for in vitro research use only