

## MIIP Antibody

Catalog No: #46613

Orders: [order@signalwayantibody.com](mailto:order@signalwayantibody.com)Support: [tech@signalwayantibody.com](mailto:tech@signalwayantibody.com)

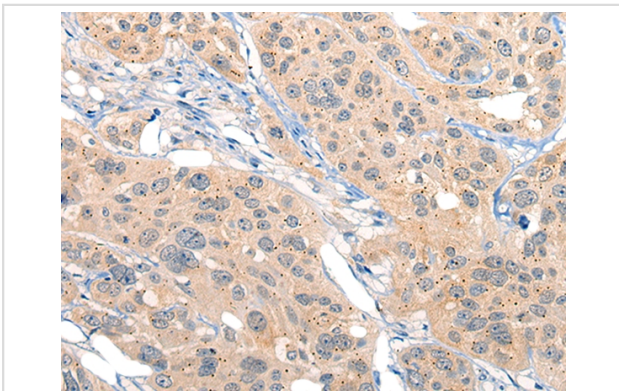
## Description

Product Name	MIIP Antibody
Host Species	Rabbit
Clonality	Polyclonal
Purification	Antigen affinity purification
Applications	IHC
Species Reactivity	Hu
Specificity	The antibody detects endogenous levels of total MIIP protein.
Immunogen Type	peptide
Immunogen Description	Synthetic peptide corresponding to residues near the C terminal of human MIIP
Target Name	MIIP
Other Names	IIP45
Accession No.	Swiss-Prot:Q5JXC2 NCBI Gene ID:60672NCBI Protein:NP_068752
Uniprot	Q5JXC2
GeneID	60672;
Concentration	1.8mg/ml
Formulation	Rabbit IgG in pH7.4 PBS, 0.05% NaN <sub>3</sub> , 40% Glycerol.
Storage	Store at -20°C

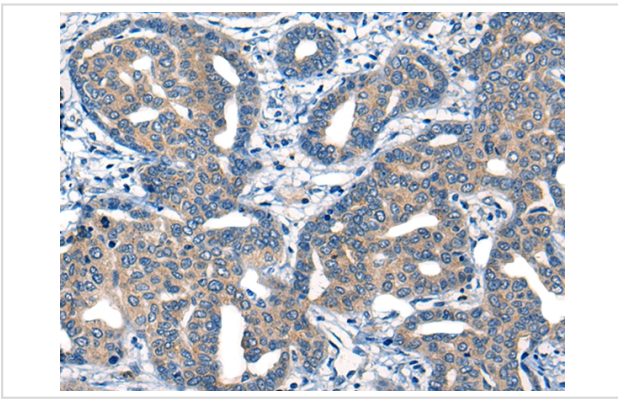
## Application Details

Immunohistochemistry: 1: 30-150

## Images



The image on the left is immunohistochemistry of paraffin-embedded Human esophagus cancer tissue using 46613(MIIP Antibody) at dilution 1/45, on the right is treated with synthetic peptide. (Original magnification: x200)



The image on the left is immunohistochemistry of paraffin-embedded Human liver cancer tissue using 46613(MIIP Antibody) at dilution 1/45, on the right is treated with synthetic peptide. (Original magnification: x200)

## Background

This gene encodes a protein that interacts with the oncogene protein insulin-like growth factor binding protein 2 and may function as an inhibitor of cell migration and invasion. This protein also interacts with the cell division protein 20 and may be involved in regulating mitotic progression. This protein may function as a tumor suppressor by inhibiting the growth of certain cancers.?

Note: This product is for in vitro research use only