

MST1R Antibody

Catalog No: #46615

Orders: order@signalwayantibody.comSupport: tech@signalwayantibody.com

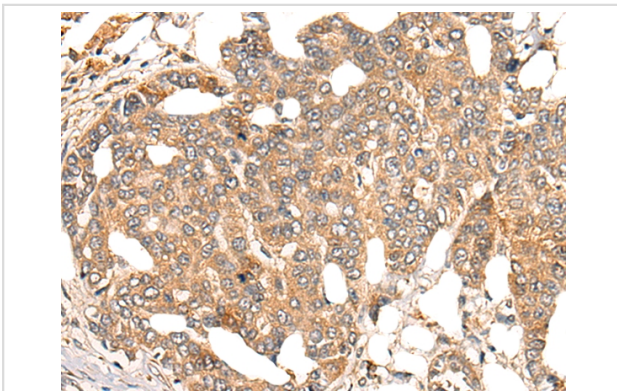
Description

Product Name	MST1R Antibody
Host Species	Rabbit
Clonality	Polyclonal
Purification	Antigen affinity purification
Applications	IHC
Species Reactivity	Hu
Specificity	The antibody detects endogenous levels of total MST1R protein.
Immunogen Type	peptide
Immunogen Description	Synthetic peptide corresponding to residues near the C terminal of human MST1R
Target Name	MST1R
Other Names	RON; PTK8; CD136; CDw136
Accession No.	Swiss-Prot:Q04912 NCBI Gene ID:4486NCBI Protein:NP_001231866
Uniprot	Q04912
GeneID	4486;
Concentration	1.5mg/ml
Formulation	Rabbit IgG in pH7.4 PBS, 0.05% NaN ₃ , 40% Glycerol.
Storage	Store at -20°C

Application Details

Immunohistochemistry: 1: 25-100

Images



The image on the left is immunohistochemistry of paraffin-embedded Human liver cancer tissue using 46615(MST1R Antibody) at dilution 1/25, on the right is treated with synthetic peptide. (Original magnification: x200)

Background

This gene encodes a cell surface receptor for macrophage-stimulating protein (MSP) with tyrosine kinase activity. The mature form of this protein is a heterodimer of disulfide-linked alpha and beta subunits, generated by proteolytic cleavage of a single-chain precursor. The beta subunit undergoes tyrosine phosphorylation upon stimulation by MSP. This protein is expressed on the ciliated epithelia of the mucociliary transport apparatus of the lung, and together with MSP, thought to be involved in host defense. Alternative splicing generates multiple transcript variants encoding different isoforms

that may undergo similar proteolytic processing.

Note: This product is for in vitro research use only