

NCBP1 Antibody

Catalog No: #46622

Orders: order@signalwayantibody.com

Support: tech@signalwayantibody.com

Description

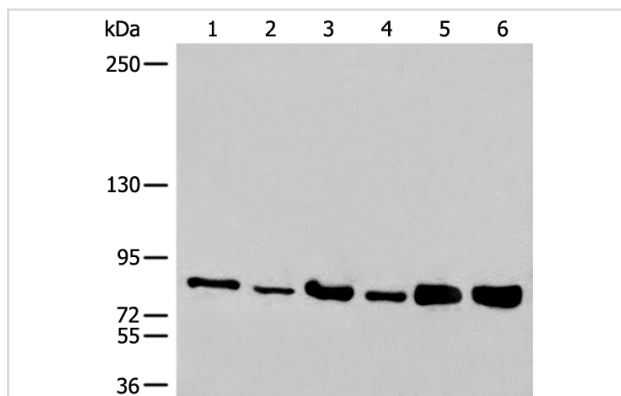
Product Name	NCBP1 Antibody
Host Species	Rabbit
Clonality	Polyclonal
Purification	Antigen affinity purification
Applications	WB IHC
Species Reactivity	Hu
Specificity	The antibody detects endogenous levels of total NCBP1 protein.
Immunogen Type	peptide
Immunogen Description	Synthetic peptide corresponding to residues near the N terminal of human NCBP1
Target Name	NCBP1
Other Names	NCBP; Sto1; CBP80
Accession No.	Swiss-Prot:Q09161NCBI Gene ID:4686NCBI Protein:NP_002477
Uniprot	Q09161
GeneID	4686;
Calculated MW	92 kDa
Concentration	0.5mg/ml
Formulation	Rabbit IgG in pH7.4 PBS, 0.05% NaN ₃ , 40% Glycerol.
Storage	Store at -20°C

Application Details

Western blotting: 1:200-1:1000

Immunohistochemistry: 1: 25-100

Images



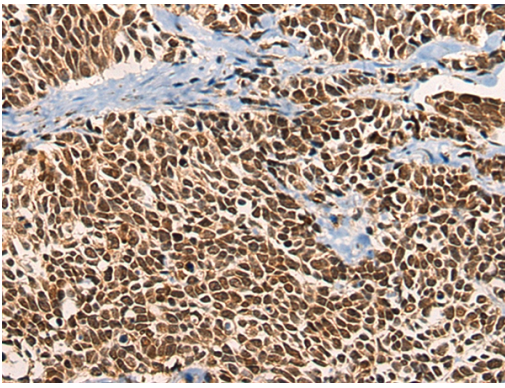
Gel: 6%SDS-PAGE

lysate: 40 µg, Lane 1-6:

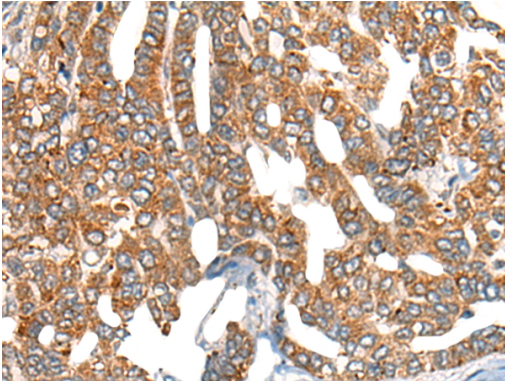
Jurkat and HEPG2 cell lysates,

Primary antibody: 46622 NCBP1 Antibody) at dilution 1/200

Secondary antibody: Goat anti rabbit IgG at 1/8000 dilution,
Exposure time: 40 seconds



The image on the left is immunohistochemistry of paraffin-embedded Human lung cancer tissue using 46622(NCBP1 Antibody) at dilution 1/20, on the right is treated with synthetic peptide. (Original magnification: x200)



The image on the left is immunohistochemistry of paraffin-embedded Human liver cancer tissue using 46622(NCBP1 Antibody) at dilution 1/20, on the right is treated with synthetic peptide. (Original magnification: x200)

Background

The product of this gene is a component of the nuclear cap-binding protein complex (CBC), which binds to the monomethylated 5' cap of nascent pre-mRNA in the nucleoplasm. The encoded protein promotes high-affinity mRNA-cap binding and associates with the CTD of RNA polymerase II. The CBC promotes pre-mRNA splicing, 3'-end processing, RNA nuclear export, and nonsense-mediated mRNA decay.

Note: This product is for in vitro research use only