

NDUFB11 Antibody

Catalog No: #46624

Orders: order@signalwayantibody.comSupport: tech@signalwayantibody.com

Description

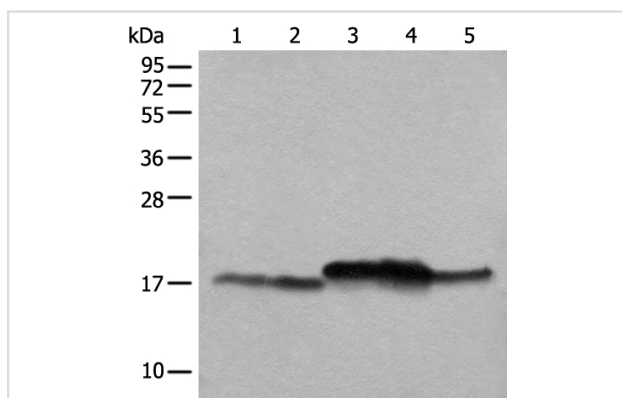
Product Name	NDUFB11 Antibody
Host Species	Rabbit
Clonality	Polyclonal
Purification	Antigen affinity purification
Applications	WB IHC
Species Reactivity	Hu Ms
Specificity	The antibody detects endogenous levels of total NDUFB11 protein.
Immunogen Type	peptide
Immunogen Description	Full length fusion protein of human NDUFB11
Target Name	NDUFB11
Other Names	ESSS; Np15; P17.3; NP17.3; CI-ESSS; LSDMCA3
Accession No.	Swiss-Prot:Q9NX14NCBI Gene ID:54539NCBI Protein:BC010665
Uniprot	Q9NX14
GeneID	54539;
Calculated MW	17 kDa
Concentration	2.3mg/ml
Formulation	Rabbit IgG in pH7.4 PBS, 0.05% NaN ₃ , 40% Glycerol.
Storage	Store at -20°C

Application Details

Western blotting: 1:1000-1:5000

Immunohistochemistry: 1: 50-300

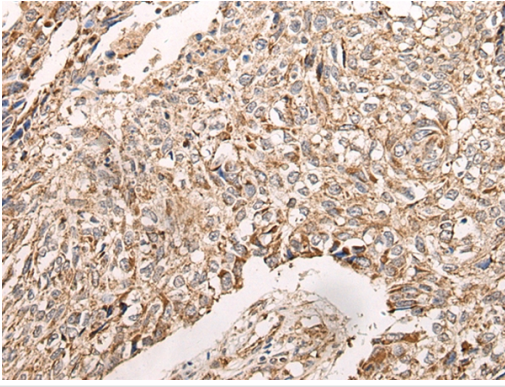
Images



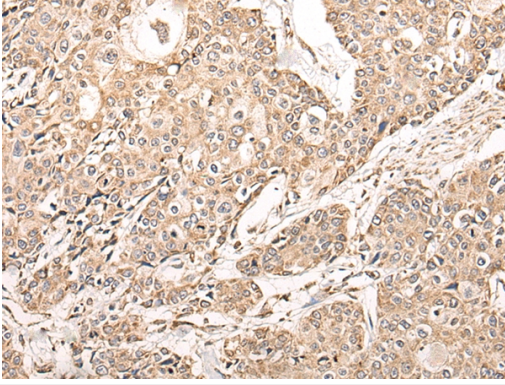
Gel: 12%SDS-PAGE

lysate: 40 µg, Lane 1-5: Mouse brain tissue, Mouse liver tissue, 231 cell, K562 cell, A431 cell lysates, Primary antibody: 46624 NDUFB11 Antibody) at dilution 1/1000

Secondary antibody: Goat anti rabbit IgG at 1/8000 dilution, Exposure time: 10 seconds



The image on the left is immunohistochemistry of paraffin-embedded Human lung cancer tissue using 46624(NDUFB11 Antibody) at dilution 1/95, on the right is treated with fusion protein. (Original magnification: x200)



The image on the left is immunohistochemistry of paraffin-embedded Human prostate cancer tissue using 46624(NDUFB11 Antibody) at dilution 1/95, on the right is treated with fusion protein. (Original magnification: x200)

Background

Complex 1 (also known as NADH dehydrogenase) of the electron transport chain (respiratory chain) is an enzymatic complex that catalyzes the transfer of electrons from NADH to ubiquinone. Free energy from the reaction is conserved in the transfer of protons into the intermembrane space to create an electrochemical proton gradient, a driving force for ATP synthesis. Complex 1 is a complicated, multi-protein, L-shaped complex composed of at least 45 different subunits and located in the mitochondrial inner membrane. NDUFB11 (NADH dehydrogenase (ubiquinone) 1 beta subcomplex subunit 11), also known as ESSS, Np15, Np17.3 (neuronal protein 17.3) or p17.3, is a hydrophobic transmembrane protein belonging to the Complex I NDUFB11 subunit family. Ubiquitously expressed, NDUFB11 localizes to the inner membrane of the mitochondrion and functions as an accessory subunit of Complex I. The cAMP-dependent phosphorylation of NDUFB11 is important for the regulation of Complex I activity.

Note: This product is for in vitro research use only