

## NTPCR Antibody

Catalog No: #46633

Orders: [order@signalwayantibody.com](mailto:order@signalwayantibody.com)Support: [tech@signalwayantibody.com](mailto:tech@signalwayantibody.com)

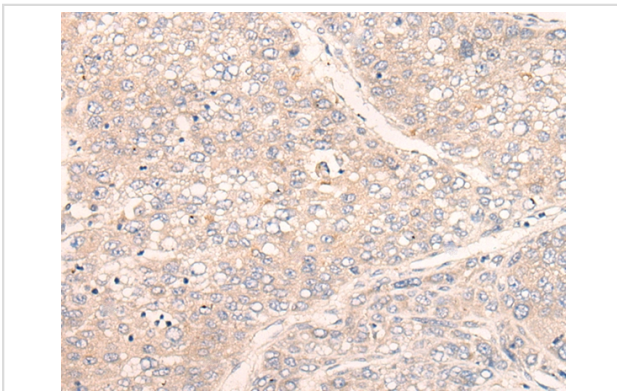
## Description

Product Name	NTPCR Antibody
Host Species	Rabbit
Clonality	Polyclonal
Purification	Antigen affinity purification
Applications	IHC
Species Reactivity	Hu
Specificity	The antibody detects endogenous levels of total NTPCR protein.
Immunogen Type	peptide
Immunogen Description	Synthetic peptide corresponding to internal residues of human NTPCR
Target Name	NTPCR
Other Names	C1orf57; HCR-NTPase
Accession No.	Swiss-Prot:Q9BSD7 NCBI Gene ID:84284NCBI Protein:NP_115700
Uniprot	Q9BSD7
GeneID	84284;
Concentration	0.5mg/ml
Formulation	Rabbit IgG in pH7.4 PBS, 0.05% NaN <sub>3</sub> , 40% Glycerol.
Storage	Store at -20°C

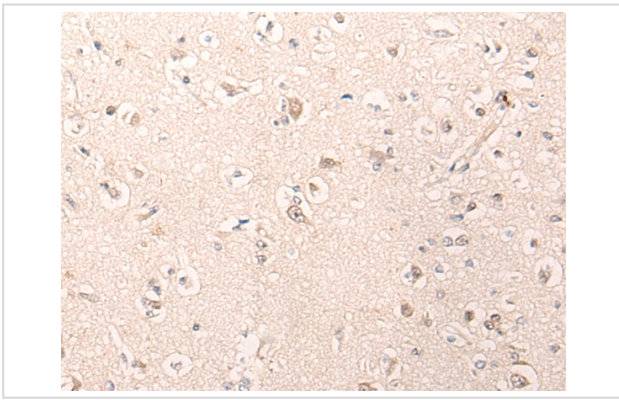
## Application Details

Immunohistochemistry: 1: 20-100

## Images



The image on the left is immunohistochemistry of paraffin-embedded Human liver cancer tissue using 46633(NTPCR Antibody) at dilution 1/25, on the right is treated with synthetic peptide. (Original magnification: x200)



The image on the left is immunohistochemistry of paraffin-embedded Human brain tissue using 46633(NTPCR Antibody) at dilution 1/25, on the right is treated with synthetic peptide. (Original magnification: x200)

## Background

Has nucleotide phosphatase activity towards ATP, GTP, CTP, TTP and UTP. Hydrolyzes nucleoside diphosphates with lower efficiency.

Note: This product is for in vitro research use only