

ORAOV1 Antibody

Catalog No: #46636

Orders: order@signalwayantibody.comSupport: tech@signalwayantibody.com

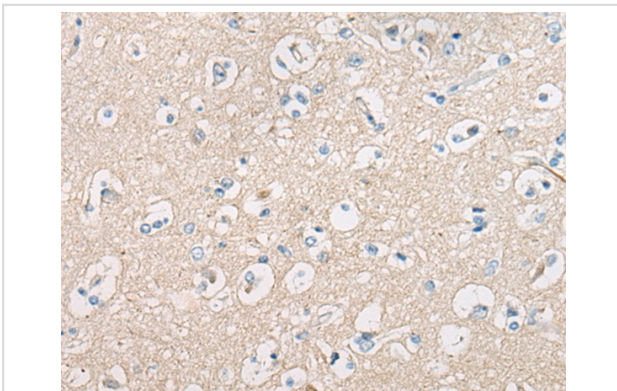
Description

Product Name	ORAOV1 Antibody
Host Species	Rabbit
Clonality	Polyclonal
Purification	Antigen affinity purification
Applications	IHC
Species Reactivity	Hu
Specificity	The antibody detects endogenous levels of total ORAOV1 protein.
Immunogen Type	peptide
Immunogen Description	Synthetic peptide corresponding to residues near the N terminal of human ORAOV1
Target Name	ORAOV1
Other Names	TAOS1
Accession No.	Swiss-Prot:Q8WV07NCBI Gene ID:220064NCBI Protein:NP_703152
Uniprot	Q8WV07
GeneID	220064;
Concentration	0.2mg/ml
Formulation	Rabbit IgG in pH7.4 PBS, 0.05% NaN ₃ , 40% Glycerol.
Storage	Store at -20°C

Application Details

Immunohistochemistry: 1: 20-100

Images



The image on the left is immunohistochemistry of paraffin-embedded Human brain tissue using 46636(ORAOV1 Antibody) at dilution 1/25, on the right is treated with synthetic peptide. (Original magnification: x200)

Background

The function of this protein remains unknown.

Note: This product is for in vitro research use only