

PIWIL2 Antibody

Catalog No: #46641

Orders: order@signalwayantibody.comSupport: tech@signalwayantibody.com

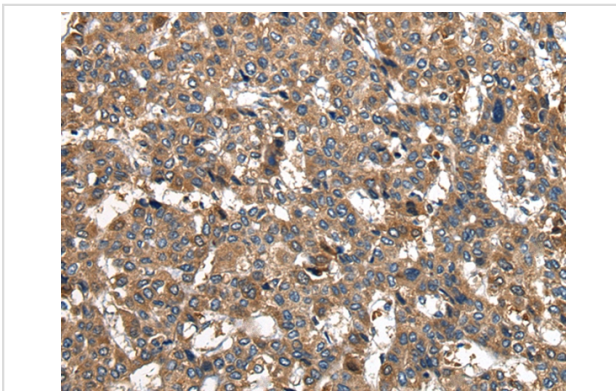
Description

Product Name	PIWIL2 Antibody
Host Species	Rabbit
Clonality	Polyclonal
Purification	Antigen affinity purification
Applications	IHC
Species Reactivity	Hu Ms
Specificity	The antibody detects endogenous levels of total PIWIL2 protein.
Immunogen Type	peptide
Immunogen Description	Synthetic peptide corresponding to internal residues of human PIWIL2
Target Name	PIWIL2
Other Names	CT80; HILI; mili; PIWIL1L
Accession No.	Swiss-Prot:Q8TC59 NCBI Gene ID:55124NCBI Protein:NP_060538
Uniprot	Q8TC59
GeneID	55124;
Concentration	1.2mg/ml
Formulation	Rabbit IgG in pH7.4 PBS, 0.05% NaN ₃ , 40% Glycerol.
Storage	Store at -20°C

Application Details

Immunohistochemistry: 1: 30-150

Images



The image on the left is immunohistochemistry of paraffin-embedded Human liver cancer tissue using 46641(PIWIL2 Antibody) at dilution 1/30, on the right is treated with synthetic peptide. (Original magnification: x200)

Background

PIWIL2 belongs to the Argonaute family of proteins, which function in development and maintenance of germline stem cells (Sasaki et al., 2003 [PubMed 12906857]).

Note: This product is for in vitro research use only