

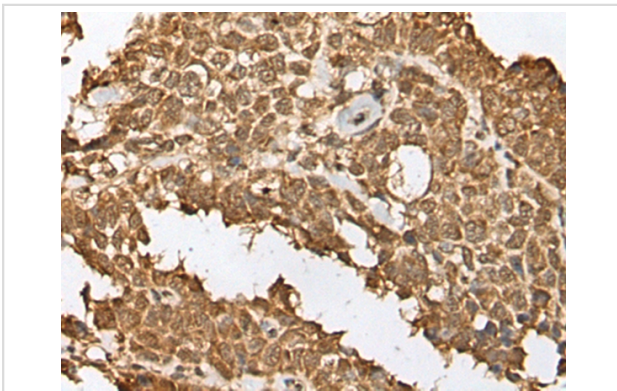
## Description

Product Name	RBL2 Antibody
Host Species	Rabbit
Clonality	Polyclonal
Purification	Antigen affinity purification
Applications	IHC
Species Reactivity	Hu Rt
Specificity	The antibody detects endogenous levels of total RBL2 protein.
Immunogen Type	peptide
Immunogen Description	Synthetic peptide corresponding to residues near the C terminal of human RBL2
Target Name	RBL2
Other Names	Rb2; P130
Accession No.	Swiss-Prot:Q08999NCBI Gene ID:5934NCBI Protein:NP_005602
Uniprot	Q08999
GeneID	5934;
Concentration	1.1mg/ml
Formulation	Rabbit IgG in pH7.4 PBS, 0.05% NaN <sub>3</sub> , 40% Glycerol.
Storage	Store at -20°C

## Application Details

Immunohistochemistry: 1: 30-150

## Images



The image on the left is immunohistochemistry of paraffin-embedded Human ovarian cancer tissue using 46651(RBL2 Antibody) at dilution 1/45, on the right is treated with synthetic peptide. (Original magnification: x200)

## Background

Key regulator of entry into cell division. Directly involved in heterochromatin formation by maintaining overall chromatin structure and, in particular, that of constitutive heterochromatin by stabilizing histone methylation. Recruits and targets histone methyltransferases KMT5B and KMT5C, leading to epigenetic transcriptional repression. Controls histone H4 'Lys-20' trimethylation. Probably acts as a transcription repressor by recruiting chromatin-modifying enzymes to promoters. Potent inhibitor of E2F-mediated trans-activation, associates preferentially with E2F5. Binds to cyclins A

and E. Binds to and may be involved in the transforming capacity of the adenovirus E1A protein. May act as a tumor suppressor.

---

Note: This product is for in vitro research use only