

RCOR1 Antibody

Catalog No: #46654

Orders: order@signalwayantibody.comSupport: tech@signalwayantibody.com

Description

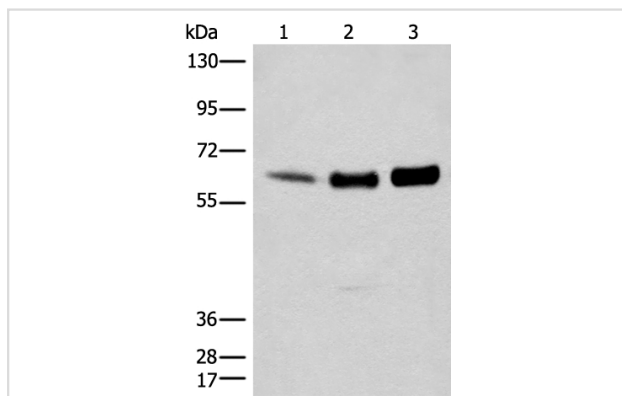
Product Name	RCOR1 Antibody
Host Species	Rabbit
Clonality	Polyclonal
Purification	Antigen affinity purification
Applications	WB IHC
Species Reactivity	Hu
Specificity	The antibody detects endogenous levels of total RCOR1 protein.
Immunogen Type	peptide
Immunogen Description	Synthetic peptide corresponding to residues near the C terminal of human RCOR1
Target Name	RCOR1
Other Names	RCOR; COREST
Accession No.	Swiss-Prot:Q9UJL0NCBI Gene ID:23186NCBI Protein:NP_055971
Uniprot	Q9UJL0
GeneID	23186;
Calculated MW	53 kDa
Concentration	0.7mg/ml
Formulation	Rabbit IgG in pH7.4 PBS, 0.05% NaN ₃ , 40% Glycerol.
Storage	Store at -20°C

Application Details

Western blotting: 1:200-1:1000

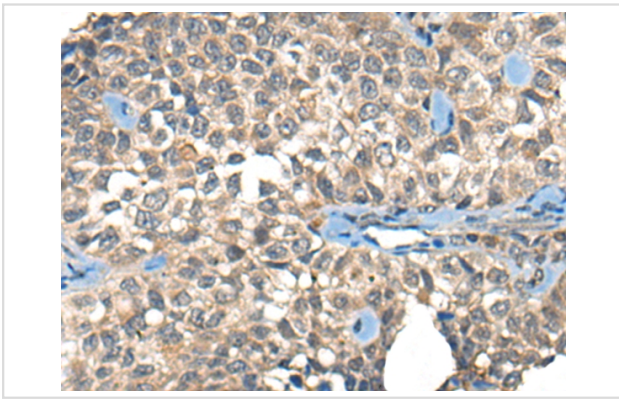
Immunohistochemistry: 1: 20-100

Images

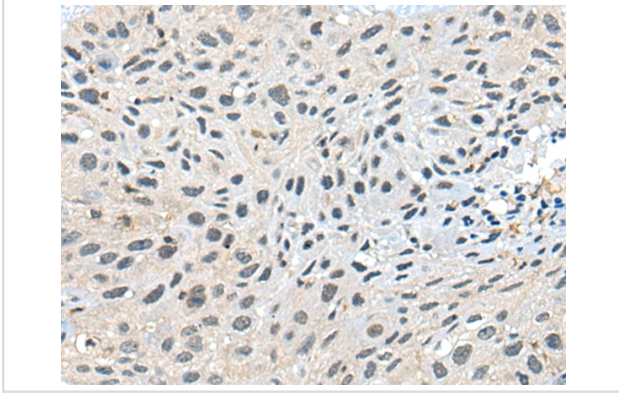


Gel: 8%SDS-PAGE

, Lysate: 40 B₁ g, Lane 1-3: A431,231 and PC-3 cell lysates,
 Primary antibody: 46654(RCOR1 Antibody) at dilution 1/200,
 Secondary antibody: Goat anti rabbit IgG at 1/8000 dilution,
 Exposure time: 2 minutes



The image on the left is immunohistochemistry of paraffin-embedded Human ovarian cancer tissue using 46654(RCOR1 Antibody) at dilution 1/20, on the right is treated with synthetic peptide. (Original magnification: x200)



The image on the left is immunohistochemistry of paraffin-embedded Human lung cancer tissue using 46654(RCOR1 Antibody) at dilution 1/20, on the right is treated with synthetic peptide. (Original magnification: x200)

Background

Essential component of the BHC complex, a corepressor complex that represses transcription of neuron-specific genes in non-neuronal cells. The BHC complex is recruited at RE1/NRSE sites by REST and acts by deacetylating and demethylating specific sites on histones, thereby acting as a chromatin modifier. In the BHC complex, it serves as a molecular beacon for the recruitment of molecular machinery, including MeCP2 and SUV39H1, that imposes silencing across a chromosomal interval. Plays a central role in demethylation of Lys-4 of histone H3 by promoting demethylase activity of KDM1A on core histones and nucleosomal substrates. It also protects KDM1A from the proteasome. Component of a RCOR/GFI/KDM1A/HDAC complex that suppresses, via histone deacetylase (HDAC) recruitment, a number of genes implicated in multilineage blood cell development and controls hematopoietic differentiation.

Note: This product is for in vitro research use only