

## RCOR2 Antibody

Catalog No: #46655

Orders: [order@signalwayantibody.com](mailto:order@signalwayantibody.com)Support: [tech@signalwayantibody.com](mailto:tech@signalwayantibody.com)

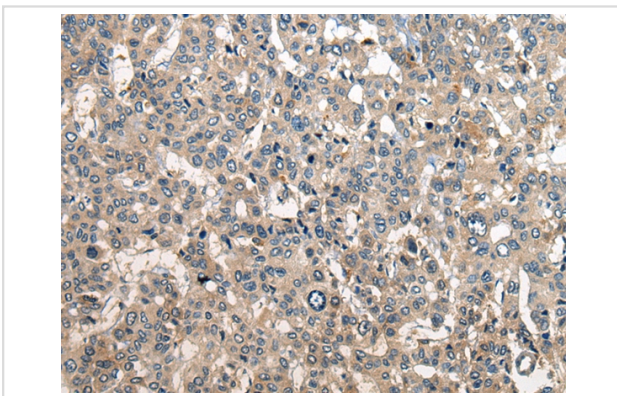
## Description

Product Name	RCOR2 Antibody
Host Species	Rabbit
Clonality	Polyclonal
Purification	Antigen affinity purification
Applications	IHC
Species Reactivity	Hu Ms Rt
Specificity	The antibody detects endogenous levels of total RCOR2 protein.
Immunogen Type	peptide
Immunogen Description	Synthetic peptide corresponding to internal residues of human RCOR2
Target Name	RCOR2
Accession No.	Swiss-Prot:Q8IZ40 NCBI Gene ID:283248NCBI Protein:NP_775858
Uniprot	Q8IZ40
GeneID	283248;
Concentration	0.9mg/ml
Formulation	Rabbit IgG in pH7.4 PBS, 0.05% NaN <sub>3</sub> , 40% Glycerol.
Storage	Store at -20°C

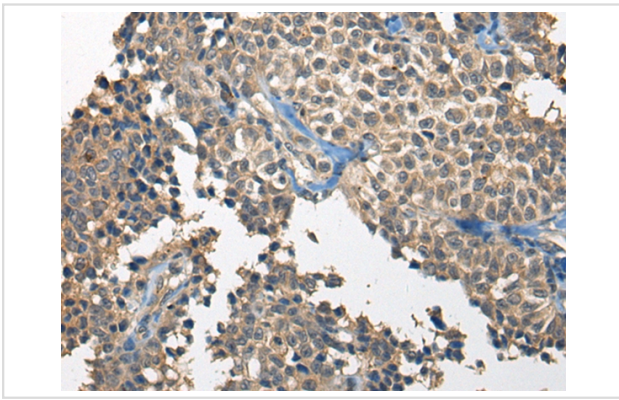
## Application Details

Immunohistochemistry: 1: 25-100

## Images



The image on the left is immunohistochemistry of paraffin-embedded Human liver cancer tissue using 46655(RCOR2 Antibody) at dilution 1/25, on the right is treated with synthetic peptide. (Original magnification: x200)



The image on the left is immunohistochemistry of paraffin-embedded Human ovarian cancer tissue using 46655(RCOR2 Antibody) at dilution 1/25, on the right is treated with synthetic peptide. (Original magnification: x200)

## Background

May act as a component of a corepressor complex that represses transcription.

Note: This product is for in vitro research use only