

SIGLECL1 Antibody

Catalog No: #46667

Orders: order@signalwayantibody.comSupport: tech@signalwayantibody.com

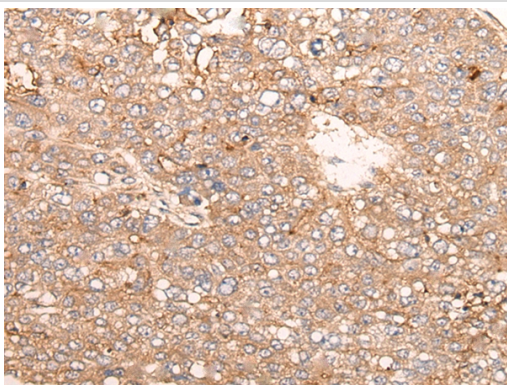
Description

Product Name	SIGLECL1 Antibody
Host Species	Rabbit
Clonality	Polyclonal
Purification	Antigen affinity purification
Applications	IHC
Species Reactivity	Hu
Specificity	The antibody detects endogenous levels of total SIGLECL1 protein.
Immunogen Type	peptide
Immunogen Description	Synthetic peptide corresponding to internal residues of human SIGLECL1
Target Name	SIGLECL1
Other Names	C19orf75; SIGLECP7; SIGLEC23P
Accession No.	Swiss-Prot:Q8N7X8 NCBI Gene ID:284369NCBI Protein:NP_775906
Uniprot	Q8N7X8
GeneID	284369;
Concentration	1.6mg/ml
Formulation	Rabbit IgG in pH7.4 PBS, 0.05% NaN ₃ , 40% Glycerol.
Storage	Store at -20°C

Application Details

Immunohistochemistry: 1: 40-200

Images



The image on the left is immunohistochemistry of paraffin-embedded Human liver cancer tissue using 46667(SIGLECL1 Antibody) at dilution 1/65, on the right is treated with synthetic peptide. (Original magnification: x200)

Background

Putative adhesion molecule that mediates sialic-acid dependent binding to cells. The sialic acid recognition site may be masked by cis interactions with sialic acids on the same cell surface.

Note: This product is for in vitro research use only