

## SLC15A1 Antibody

Catalog No: #46668

Orders: [order@signalwayantibody.com](mailto:order@signalwayantibody.com)Support: [tech@signalwayantibody.com](mailto:tech@signalwayantibody.com)

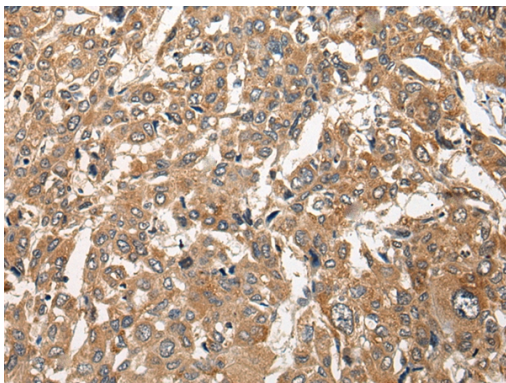
## Description

Product Name	SLC15A1 Antibody
Host Species	Rabbit
Clonality	Polyclonal
Purification	Antigen affinity purification
Applications	IHC
Species Reactivity	Hu
Specificity	The antibody detects endogenous levels of total SLC15A1 protein.
Immunogen Type	peptide
Immunogen Description	Synthetic peptide corresponding to residues near the C terminal of human SLC15A1
Target Name	SLC15A1
Other Names	PEPT1; HPECT1; HPEPT1
Accession No.	Swiss-Prot:P46059NCBI Gene ID:6564NCBI Protein:NP_005064
Uniprot	P46059
GeneID	6564;
Concentration	0.6mg/ml
Formulation	Rabbit IgG in pH7.4 PBS, 0.05% NaN <sub>3</sub> , 40% Glycerol.
Storage	Store at -20°C

## Application Details

Immunohistochemistry: 1: 25-100

## Images



The image on the left is immunohistochemistry of paraffin-embedded Human liver cancer tissue using 46668(SLC15A1 Antibody) at dilution 1/20, on the right is treated with synthetic peptide. (Original magnification: x200)

## Background

This gene encodes an intestinal hydrogen peptide cotransporter that is a member of the solute carrier family 15. The encoded protein is localized to the brush border membrane of the intestinal epithelium and mediates the uptake of di- and tripeptides from the lumen into the enterocytes. This protein plays an important role in the uptake and digestion of dietary proteins. This protein also facilitates the absorption of numerous peptidomimetic drugs.

---

Note: This product is for in vitro research use only