

SLC5A3 Antibody

Catalog No: #46670

Orders: order@signalwayantibody.comSupport: tech@signalwayantibody.com

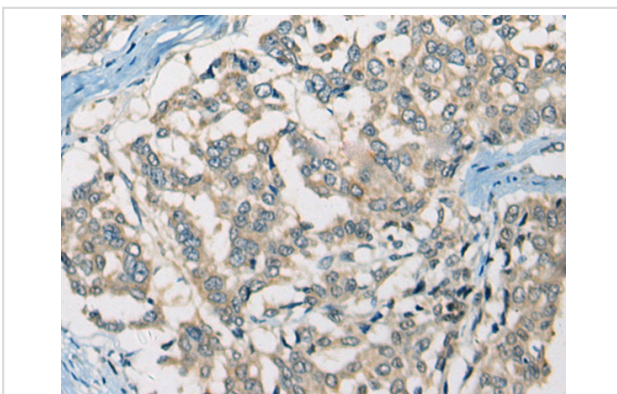
Description

Product Name	SLC5A3 Antibody
Host Species	Rabbit
Clonality	Polyclonal
Purification	Antigen affinity purification
Applications	IHC
Species Reactivity	Hu Ms
Specificity	The antibody detects endogenous levels of total SLC5A3 protein.
Immunogen Type	peptide
Immunogen Description	Synthetic peptide corresponding to internal residues of human SLC5A3
Target Name	SLC5A3
Other Names	BCW2; SMIT; SMIT1; SMIT2
Accession No.	Swiss-Prot:P53794NCBI Gene ID:6526NCBI Protein:NP_008864
Uniprot	P53794
GeneID	6526;
Concentration	0.8mg/ml
Formulation	Rabbit IgG in pH7.4 PBS, 0.05% NaN ₃ , 40% Glycerol.
Storage	Store at -20°C

Application Details

Immunohistochemistry: 1: 25-100

Images



The image on the left is immunohistochemistry of paraffin-embedded Human liver cancer tissue using 46670(SLC5A3 Antibody) at dilution 1/25, on the right is treated with synthetic peptide. (Original magnification: x200)

Background

Prevents intracellular accumulation of high concentrations of myo-inositol (an osmolyte) that result in impairment of cellular function.

Note: This product is for in vitro research use only