

## SLC5A8 Antibody

Catalog No: #46671

Orders: [order@signalwayantibody.com](mailto:order@signalwayantibody.com)Support: [tech@signalwayantibody.com](mailto:tech@signalwayantibody.com)

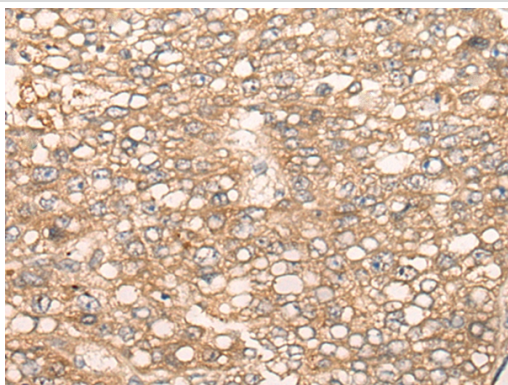
## Description

Product Name	SLC5A8 Antibody
Host Species	Rabbit
Clonality	Polyclonal
Purification	Antigen affinity purification
Applications	IHC
Species Reactivity	Hu
Specificity	The antibody detects endogenous levels of total SLC5A8 protein.
Immunogen Type	peptide
Immunogen Description	Synthetic peptide corresponding to residues near the C terminal of human SLC5A8
Target Name	SLC5A8
Other Names	AIT; SMCT; SMCT1
Accession No.	Swiss-Prot:Q8N695NCBI Gene ID:160728NCBI Protein:NP_666018
Uniprot	Q8N695
GeneID	160728;
Concentration	0.5mg/ml
Formulation	Rabbit IgG in pH7.4 PBS, 0.05% NaN <sub>3</sub> , 40% Glycerol.
Storage	Store at -20°C

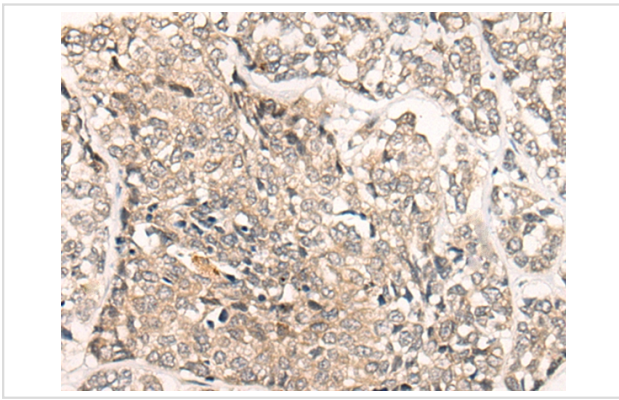
## Application Details

Immunohistochemistry: 1: 25-100

## Images



The image on the left is immunohistochemistry of paraffin-embedded Human liver cancer tissue using 46671 (SLC5A8 Antibody) at dilution 1/25, on the right is treated with synthetic peptide. (Original magnification: x200)



The image on the left is immunohistochemistry of paraffin-embedded Human esophagus cancer tissue using 46671 (SLC5A8 Antibody) at dilution 1/25, on the right is treated with synthetic peptide. (Original magnification: x200)

## Background

SLC5A8 has been shown to transport iodide by a passive mechanism (Rodriguez et al., 2002 [PubMed 12107270]) and monocarboxylates and short-chain fatty acids by a sodium-coupled mechanism (Gopal et al., 2004 [PubMed 15322102]). In kidney, SLC5A8 functions as a high-affinity sodium-coupled lactate transporter involved in reabsorption of lactate and maintenance of blood lactate levels (Thangaraju et al., 2006 [PubMed 16873376]).

Note: This product is for in vitro research use only