

SLC7A1 Antibody

Catalog No: #46673

Orders: order@signalwayantibody.comSupport: tech@signalwayantibody.com

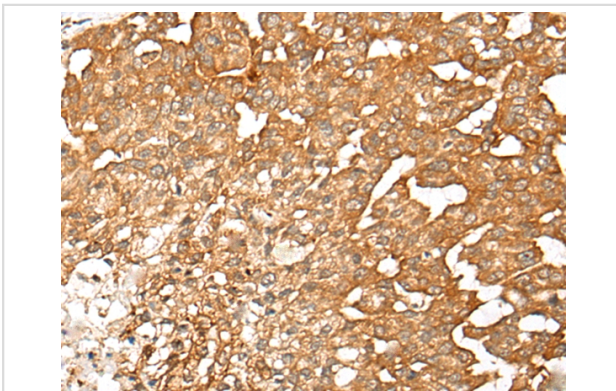
Description

Product Name	SLC7A1 Antibody
Host Species	Rabbit
Clonality	Polyclonal
Purification	Antigen affinity purification
Applications	IHC
Species Reactivity	Hu
Specificity	The antibody detects endogenous levels of total SLC7A1 protein.
Immunogen Type	peptide
Immunogen Description	Synthetic peptide corresponding to residues near the C terminal of human SLC7A1
Target Name	SLC7A1
Other Names	ERR; ATRC1; CAT-1; HCAT1; REC1L
Accession No.	Swiss-Prot:P30825 NCBI Gene ID:6541NCBI Protein:NP_003036
Uniprot	P30825
GeneID	6541;
Concentration	0.6mg/ml
Formulation	Rabbit IgG in pH7.4 PBS, 0.05% NaN ₃ , 40% Glycerol.
Storage	Store at -20°C

Application Details

Immunohistochemistry: 1: 25-100

Images



The image on the left is immunohistochemistry of paraffin-embedded Human liver cancer tissue using 46673(SLC7A1 Antibody) at dilution 1/25, on the right is treated with synthetic peptide. (Original magnification: x200)

Background

High-affinity, low capacity permease involved in the transport of the cationic amino acids (arginine, lysine and ornithine) in non-hepatic tissues. May also function as an ecotropic retroviral leukemia receptor.

Note: This product is for in vitro research use only