

## SLC9A3R1 Antibody

Catalog No: #46674

Orders: order@signalwayantibody.com

Support: tech@signalwayantibody.com

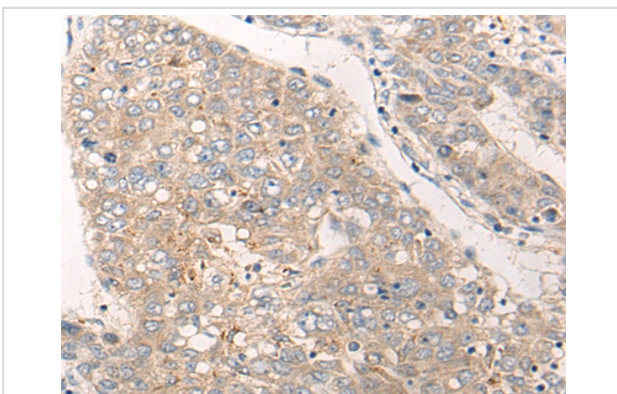
## Description

Product Name	SLC9A3R1 Antibody
Host Species	Rabbit
Clonality	Polyclonal
Purification	Antigen affinity purification
Applications	IHC
Species Reactivity	Hu Ms Rt
Specificity	The antibody detects endogenous levels of total SLC9A3R1 protein.
Immunogen Type	peptide
Immunogen Description	Synthetic peptide corresponding to residues near the C terminal of human SLC9A3R1
Target Name	SLC9A3R1
Other Names	EBP50; NHERF; NHERF1; NHERF-1; NPHLOP2
Accession No.	Swiss-Prot:O14745NCBI Gene ID:9368NCBI Protein:NP_004243
Uniprot	O14745
GeneID	9368;
Concentration	0.5mg/ml
Formulation	Rabbit IgG in pH7.4 PBS, 0.05% NaN <sub>3</sub> , 40% Glycerol.
Storage	Store at -20°C

## Application Details

Immunohistochemistry: 1: 20-100

## Images



The image on the left is immunohistochemistry of paraffin-embedded Human liver cancer tissue using 46674(SLC9A3R1 Antibody) at dilution 1/25, on the right is treated with synthetic peptide. (Original magnification: x200)

## Background

This gene encodes a sodium/hydrogen exchanger regulatory cofactor. The protein interacts with and regulates various proteins including the cystic fibrosis transmembrane conductance regulator and G-protein coupled receptors such as the beta2-adrenergic receptor and the parathyroid hormone 1 receptor. The protein also interacts with proteins that function as linkers between integral membrane and cytoskeletal proteins. The protein localizes to actin-rich structures including membrane ruffles, microvilli, and filopodia. Mutations in this gene result in hypophosphatemic

nephrolithiasis/osteoporosis type 2, and loss of heterozygosity of this gene is implicated in breast cancer.

---

Note: This product is for in vitro research use only