

SOGA1 Antibody

Catalog No: #46675

Orders: order@signalwayantibody.comSupport: tech@signalwayantibody.com

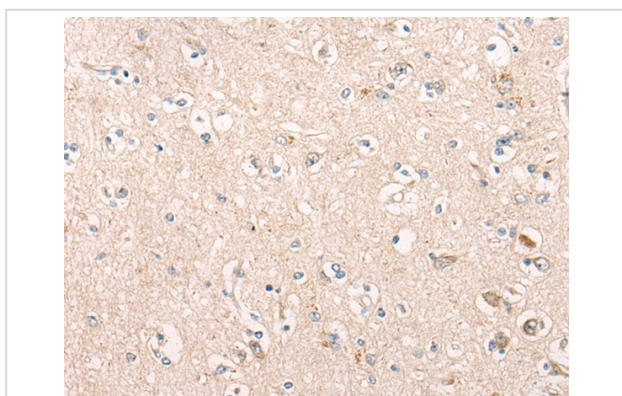
Description

Product Name	SOGA1 Antibody
Host Species	Rabbit
Clonality	Polyclonal
Purification	Antigen affinity purification
Applications	IHC
Species Reactivity	Hu
Specificity	The antibody detects endogenous levels of total SOGA1 protein.
Immunogen Type	peptide
Immunogen Description	Synthetic peptide corresponding to residues near the C terminal of human SOGA1
Target Name	SOGA1
Other Names	SOGA; KIAA0889; C20orf117
Accession No.	Swiss-Prot:O94964 NCBI Gene ID:140710NCBI Protein:NP_954650
Uniprot	O94964
GeneID	140710;
Concentration	0.8mg/ml
Formulation	Rabbit IgG in pH7.4 PBS, 0.05% NaN ₃ , 40% Glycerol.
Storage	Store at -20°C

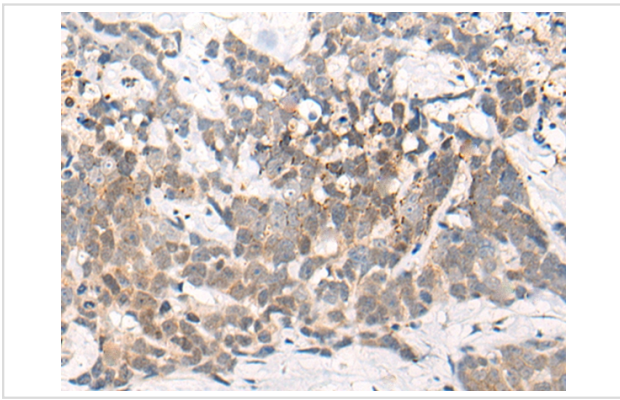
Application Details

Immunohistochemistry: 1: 20-100

Images



The image on the left is immunohistochemistry of paraffin-embedded Human brain tissue using 46675(SOGA1 Antibody) at dilution 1/30, on the right is treated with synthetic peptide. (Original magnification: x200)



The image on the left is immunohistochemistry of paraffin-embedded Human thyroid cancer tissue using 46675(SOGA1 Antibody) at dilution 1/30, on the right is treated with synthetic peptide. (Original magnification: x200)

Background

Regulates autophagy by playing a role in the reduction of glucose production in an adiponectin- and insulin-dependent manner.

Note: This product is for in vitro research use only