

SP7 Antibody

Catalog No: #46676

Orders: order@signalwayantibody.comSupport: tech@signalwayantibody.com

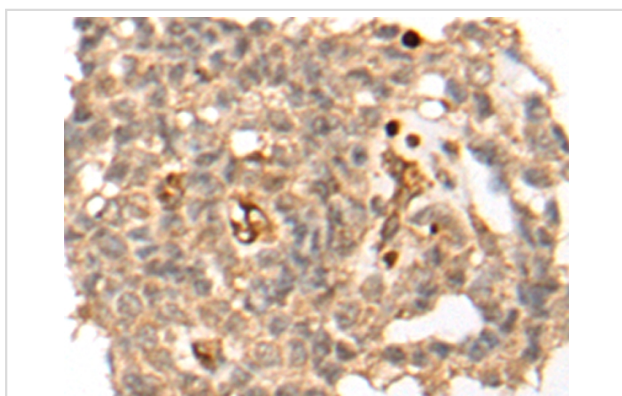
Description

Product Name	SP7 Antibody
Host Species	Rabbit
Clonality	Polyclonal
Purification	Antigen affinity purification
Applications	IHC
Species Reactivity	Hu
Specificity	The antibody detects endogenous levels of total SP7 protein.
Immunogen Type	peptide
Immunogen Description	Synthetic peptide corresponding to internal residues of human SP7
Target Name	SP7
Other Names	OSX; OI11; OI12; osterix
Accession No.	Swiss-Prot:Q8TDD2NCBI Gene ID:121340NCBI Protein:NP_001166938
Uniprot	Q8TDD2
GeneID	121340;
Concentration	0.7mg/ml
Formulation	Rabbit IgG in pH7.4 PBS, 0.05% NaN ₃ , 40% Glycerol.
Storage	Store at -20°C

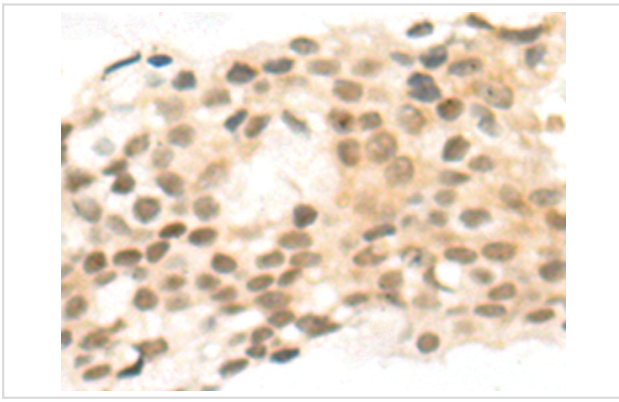
Application Details

Immunohistochemistry: 1: 25-100

Images



The image on the left is immunohistochemistry of paraffin-embedded Human ovarian cancer tissue using 46676(SP7 Antibody) at dilution 1/30, on the right is treated with synthetic peptide. (Original magnification: x200)



The image on the left is immunohistochemistry of paraffin-embedded Human breast cancer tissue using 46676(SP7 Antibody) at dilution 1/30, on the right is treated with synthetic peptide. (Original magnification: x200)

Background

This gene encodes a member of the Sp subfamily of Sp/XKLF transcription factors. Sp family proteins are sequence-specific DNA-binding proteins characterized by an amino-terminal trans-activation domain and three carboxy-terminal zinc finger motifs. This protein is a bone specific transcription factor and is required for osteoblast differentiation and bone formation.

Note: This product is for in vitro research use only