

USP38 Antibody

Catalog No: #46699

Orders: order@signalwayantibody.comSupport: tech@signalwayantibody.com

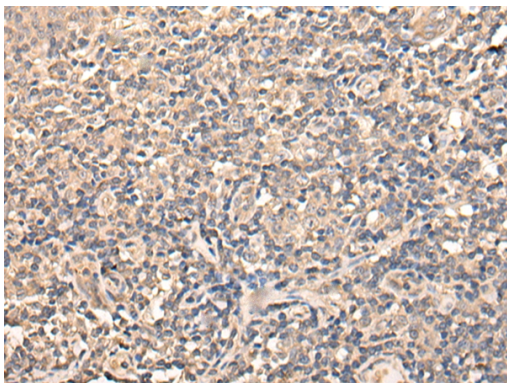
Description

Product Name	USP38 Antibody
Host Species	Rabbit
Clonality	Polyclonal
Purification	Antigen affinity purification
Applications	IHC
Species Reactivity	Hu
Specificity	The antibody detects endogenous levels of total USP38 protein.
Immunogen Type	peptide
Immunogen Description	Synthetic protein corresponding to residues near the C terminal of human USP38
Target Name	USP38
Other Names	HP43.8KD
Accession No.	Swiss-Prot:Q8NB14NCBI Gene ID:84640NCBI Protein:BC068975
Uniprot	Q8NB14
GeneID	84640;
Concentration	0.8mg/ml
Formulation	Rabbit IgG in pH7.4 PBS, 0.05% NaN ₃ , 40% Glycerol.
Storage	Store at -20°C

Application Details

Immunohistochemistry: 1: 25-100

Images



The image on the left is immunohistochemistry of paraffin-embedded Human tonsil tissue using 46699(USP38 Antibody) at dilution 1/30, on the right is treated with fusion protein. (Original magnification: x200)

Background

USP38 (ubiquitin specific peptidase 38), also known as HP43.8KD, is a 1,042 amino acid deubiquitinating enzyme that participates in the Ub pathway, exhibiting a preference towards 'Lys-63'-linked Ubiquitin chains. A member of the peptidase C19 family, the catalytic activity of USP38 involves a combination of the ubiquitin carboxyl-terminal thiolester and water to produce ubiquitin and a thiol. USP38 is highly expressed in skeletal muscle and adrenal gland.

Note: This product is for in vitro research use only