

USP6NL Antibody

Catalog No: #46700

Orders: order@signalwayantibody.comSupport: tech@signalwayantibody.com

Description

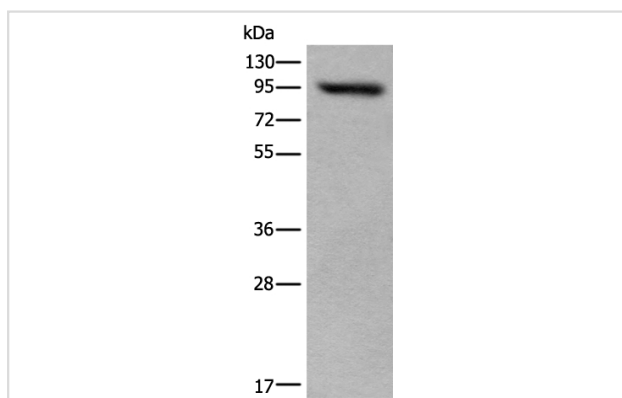
Product Name	USP6NL Antibody
Host Species	Rabbit
Clonality	Polyclonal
Purification	Antigen affinity purification
Applications	WB IHC
Species Reactivity	Hu
Specificity	The antibody detects endogenous levels of total USP6NL protein.
Immunogen Type	peptide
Immunogen Description	Synthetic protein corresponding to residues near the C terminal of human USP6NL
Target Name	USP6NL
Other Names	RNTRE; TRE2NL; USP6NL-IT1
Accession No.	Swiss-Prot:Q92738NCBI Gene ID:9712NCBI Protein:BC042943
Uniprot	Q92738
GeneID	9712;
Calculated MW	94 kDa
Concentration	0.7mg/ml
Formulation	Rabbit IgG in pH7.4 PBS, 0.05% NaN ₃ , 40% Glycerol.
Storage	Store at -20°C

Application Details

Western blotting: 1:500-1:2000

Immunohistochemistry: 1: 25-100

Images

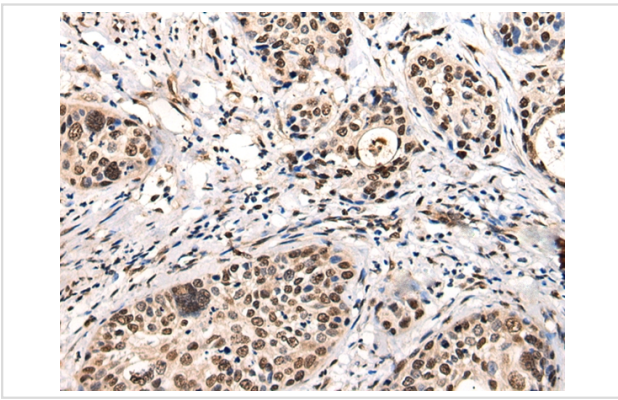


Gel: 8%SDS-PAGE

lysate: 40 µg, Lane: 293T cell lysate,

Primary antibody: 46700 (USP6NL Antibody) at dilution 1/400

Secondary antibody: Goat anti rabbit IgG at 1/8000 dilution,
Exposure time: 2 minutes



The image on the left is immunohistochemistry of paraffin-embedded Human cervical cancer tissue using 46700(USP6NL Antibody) at dilution 1/30, on the right is treated with fusion protein. (Original magnification: x200)

Background

Acts as a GTPase-activating protein for RAB5A. Involved in receptor trafficking. In complex with EPS8 inhibits internalization of EGFR.

Note: This product is for in vitro research use only