

UTP18 Antibody

Catalog No: #46702

Orders: order@signalwayantibody.comSupport: tech@signalwayantibody.com

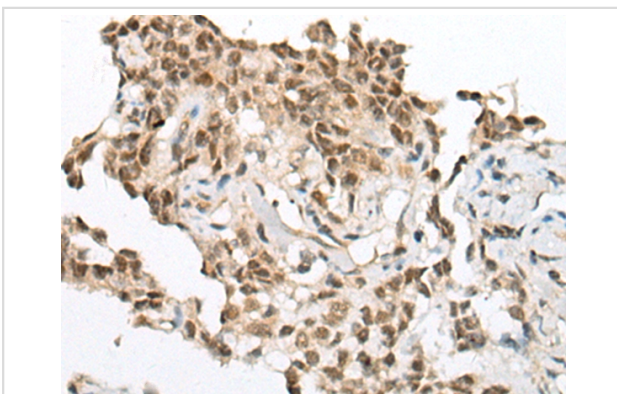
Description

Product Name	UTP18 Antibody
Host Species	Rabbit
Clonality	Polyclonal
Purification	Antigen affinity purification
Applications	IHC
Species Reactivity	Hu
Specificity	The antibody detects endogenous levels of total UTP18 protein.
Immunogen Type	peptide
Immunogen Description	Synthetic peptide corresponding to residues near the C terminal of human UTP18
Target Name	UTP18
Other Names	WDR50; CGI-48
Accession No.	Swiss-Prot:Q9Y5J1 NCBI Gene ID:51096NCBI Protein:NP_057085
Uniprot	Q9Y5J1
GeneID	51096;
Concentration	0.2mg/ml
Formulation	Rabbit IgG in pH7.4 PBS, 0.05% NaN ₃ , 40% Glycerol.
Storage	Store at -20°C

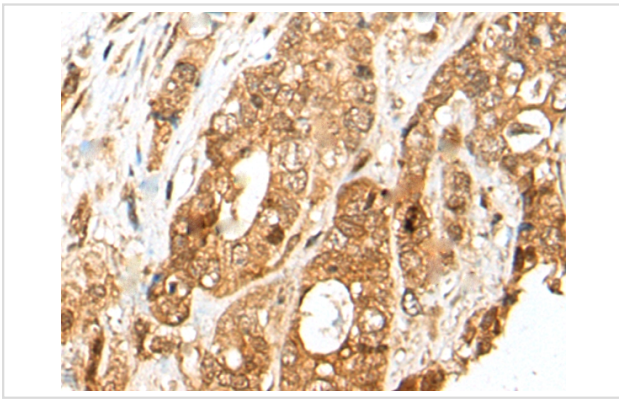
Application Details

Immunohistochemistry: 1: 10-50

Images



The image on the left is immunohistochemistry of paraffin-embedded Human ovarian cancer tissue using 46702(UTP18 Antibody) at dilution 1/25, on the right is treated with synthetic peptide. (Original magnification: x200)



The image on the left is immunohistochemistry of paraffin-embedded Human gastric cancer tissue using 46702(UTP18 Antibody) at dilution 1/25, on the right is treated with synthetic peptide. (Original magnification: x200)

Background

WD-repeats are motifs that are found in a variety of proteins and are characterized by a conserved core of 40-60 amino acids that commonly form a tertiary propeller structure. While proteins that contain WD-repeats participate in a wide range of cellular functions, they are generally involved in regulatory mechanisms concerning chromatin assembly, cell cycle control, signal transduction, RNA processing, apoptosis and vesicular trafficking. UTP18 (U3 small nucleolar RNA-associated protein 18), also known as WDR50 (WD repeat-containing protein 50), is a 556 amino acid protein that localizes to the nucleus, contains six WD repeats and is thought to be involved in the processing of pre-18S ribosomal RNA. The gene encoding UTP18 maps to human chromosome 17, which comprises over 2.5% of the human genome and encodes over 1,200 genes.

Note: This product is for in vitro research use only