

WDFY1 Antibody

Catalog No: #46708

Orders: order@signalwayantibody.comSupport: tech@signalwayantibody.com

Description

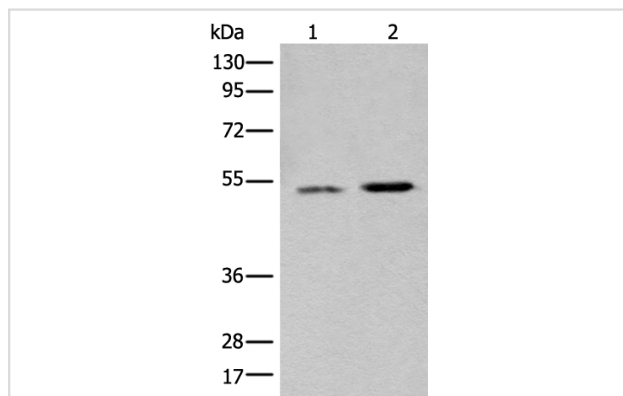
Product Name	WDFY1 Antibody
Host Species	Rabbit
Clonality	Polyclonal
Purification	Antigen affinity purification
Applications	WB IHC
Species Reactivity	Hu
Specificity	The antibody detects endogenous levels of total WDFY1 protein.
Immunogen Type	peptide
Immunogen Description	Synthetic protein corresponding to residues near the C terminal of human WDFY1
Target Name	WDFY1
Other Names	WDF1; FENS-1; ZFYVE17
Accession No.	Swiss-Prot:Q8IWB7NCBI Gene ID:57590NCBI Protein:BC040525
Uniprot	Q8IWB7
GeneID	57590;
Calculated MW	46 kDa
Concentration	0.9mg/ml
Formulation	Rabbit IgG in pH7.4 PBS, 0.05% NaN ₃ , 40% Glycerol.
Storage	Store at -20°C

Application Details

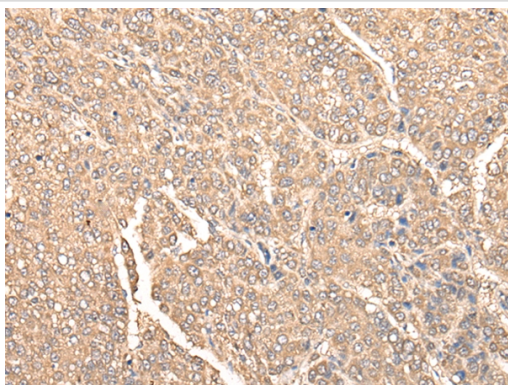
Western blotting: 1:200-1:1000

Immunohistochemistry: 1: 25-100

Images



Gel: 8%SDS-PAGE
 lysate: 40 B μ g, Lane 1-2: Human heart tissue and Mouse heart tissue lysates,
 Primary antibody: 46708B \times B \times WDFY1 Antibody) at dilution 1/650 dilution,
 Secondary antibody: Goat anti rabbit IgG at 1/8000 dilution,
 Exposure time: 1 minute



The image on the left is immunohistochemistry of paraffin-embedded Human liver cancer tissue using 46708(WDFY1 Antibody) at dilution 1/35, on the right is treated with fusion protein. (Original magnification: x200)

Background

The protein encoded by this gene is a phosphatidylinositol 3-phosphate binding protein, which contains a FYVE zinc finger domain and multiple WD-40 repeat domains. When exogenously expressed, it localizes to early endosomes. Mutagenesis analysis demonstrates that this endosomal localization is mediated by the FYVE domain.?

Note: This product is for in vitro research use only