

WDFY4 Antibody

Catalog No: #46710

Orders: order@signalwayantibody.comSupport: tech@signalwayantibody.com

Description

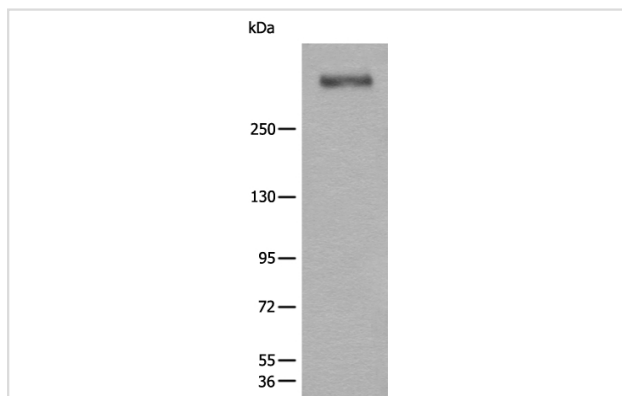
Product Name	WDFY4 Antibody
Host Species	Rabbit
Clonality	Polyclonal
Purification	Antigen affinity purification
Applications	WB IHC
Species Reactivity	Hu
Specificity	The antibody detects endogenous levels of total WDFY4 protein.
Immunogen Type	peptide
Immunogen Description	Fusion protein of human WDFY4
Target Name	WDFY4
Other Names	C10orf64
Accession No.	Swiss-Prot:Q6ZS81NCBI Gene ID:57705NCBI Protein:BC034937
Uniprot	Q6ZS81
GeneID	57705;
Calculated MW	354 kDa
Concentration	0.5mg/ml
Formulation	Rabbit IgG in pH7.4 PBS, 0.05% NaN ₃ , 40% Glycerol.
Storage	Store at -20°C

Application Details

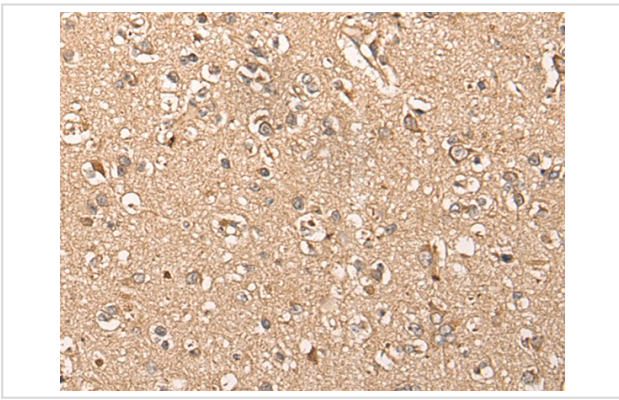
Western blotting: 1:200-1:1000

Immunohistochemistry: 1: 25-100

Images



Gel: 6%SDS-PAGE
 lysate: 40 µg, Lane: Human lung tissue lysate,
 Primary antibody: 46710 (WDFY4 Antibody) at dilution
 1/300 dilution,
 Secondary antibody: Goat anti rabbit IgG at 1/8000 dilution,
 Exposure time: 4 minutes



The image on the left is immunohistochemistry of paraffin-embedded Human brain tissue using 46710(WDFY4 Antibody) at dilution 1/30, on the right is treated with fusion protein. (Original magnification: x200)

Background

WDFY4 (WDFY family member 4) is a protein-coding gene. Diseases associated with WDFY4 include chediak-higashi syndrome, and systemic lupus erythematosus.

Note: This product is for in vitro research use only