

## ZC2HC1A Antibody

Catalog No: #46716

Orders: [order@signalwayantibody.com](mailto:order@signalwayantibody.com)Support: [tech@signalwayantibody.com](mailto:tech@signalwayantibody.com)

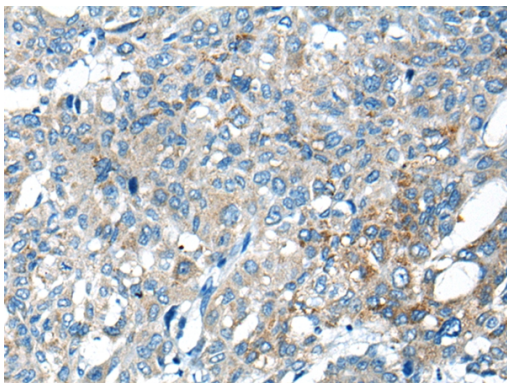
## Description

Product Name	ZC2HC1A Antibody
Host Species	Rabbit
Clonality	Polyclonal
Purification	Antigen affinity purification
Applications	IHC
Species Reactivity	Hu
Specificity	The antibody detects endogenous levels of total ZC2HC1A protein.
Immunogen Type	peptide
Immunogen Description	Synthetic peptide corresponding to residues near the C terminal of human ZC2HC1A
Target Name	ZC2HC1A
Other Names	CGI-62; C8orf70; FAM164A
Accession No.	Swiss-Prot:Q96GY0 NCBI Gene ID:51101NCBI Protein:NP_057094
Uniprot	Q96GY0
GeneID	51101;
Concentration	0.9mg/ml
Formulation	Rabbit IgG in pH7.4 PBS, 0.05% NaN <sub>3</sub> , 40% Glycerol.
Storage	Store at -20°C

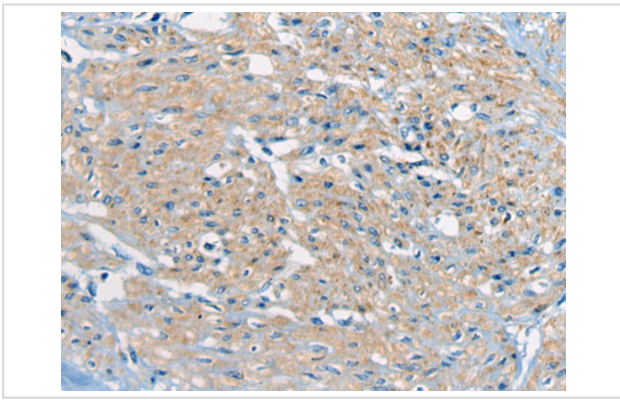
## Application Details

Immunohistochemistry: 1: 20-100

## Images



The image on the left is immunohistochemistry of paraffin-embedded Human liver cancer tissue using 46716(ZC2HC1A Antibody) at dilution 1/30, on the right is treated with synthetic peptide. (Original magnification: x200)



The image on the left is immunohistochemistry of paraffin-embedded Human prostate cancer tissue using 46716(ZC2HC1A Antibody) at dilution 1/30, on the right is treated with synthetic peptide. (Original magnification: x200)

## Background

---

The function of this protein remains unknown.

---

Note: This product is for in vitro research use only