

## CX3CR1 Antibody

Catalog No: #24082

Orders: [order@signalwayantibody.com](mailto:order@signalwayantibody.com)Support: [tech@signalwayantibody.com](mailto:tech@signalwayantibody.com)

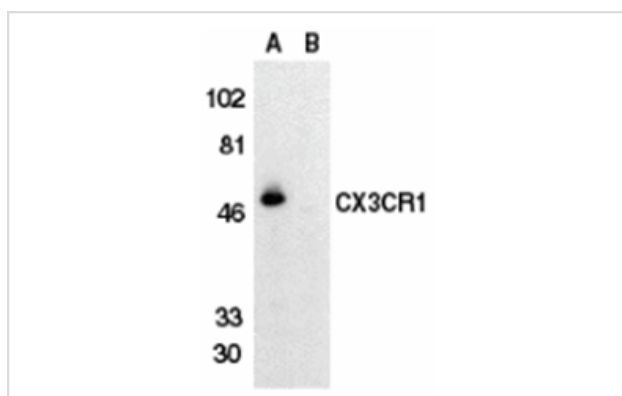
## Description

Product Name	CX3CR1 Antibody
Host Species	Rabbit
Clonality	Polyclonal
Purification	Affinity chromatography purified via peptide column
Applications	ELISA WB IHC
Species Reactivity	Hu
Immunogen Type	Peptide
Immunogen Description	Raised against a peptide corresponding to amino acids in a extracellular loop of human CX3CR1. The sequence is identical to that of rat CX3CR1 and differs from that of mouse CX3CR1 by one amino acid.
Target Name	CX3CR1
Other Names	V28
Accession No.	P49238
Uniprot	P49238
GeneID	1524;
Concentration	1mg/ml
Formulation	Supplied in PBS containing 0.02% sodium azide.
Storage	Can be stored at -20°C, stable for one year. As with all antibodies care should be taken to avoid repeated freeze thaw cycles. Antibodies should not be exposed to prolonged high temperatures.

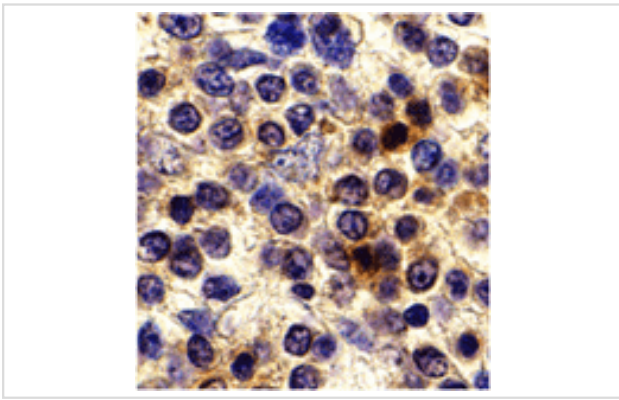
## Application Details

Predicted MW: 50 kd

## Images



Western blot analysis of CX3CR1 in THP-1 cell lysate in the absence (lane A) or presence (lane B) of blocking peptide with CX3CR1 antibody at 1:500 dilution.



Immunohistochemistry of CX3CR1 in human spleen cells with CX3CR1 antibody at 10 ug/mL.

## Background

CX3CR1 is one of the chemokine receptors that are required as coreceptors for HIV infection. The genes encoding human, mouse, and rat CX3CR1 were cloned and designated V28 and CMKBRL1, CX3CR1, and RBS11, respectively. The encoded seven transmembrane protein was recently identified as the receptor for a novel transmembrane molecule, fractalkine, and renamed CX3CR1. Recently, CX3CR1 was found to serve as a coreceptor for HIV-1 and HIV-2 envelope fusion and virus infection, which can be inhibited by fractokine. CX3CR1 mediates leukocyte migration and adhesion. CX3CR1 is expressed in a variety of human tissues and cell lines.

Note: This product is for in vitro research use only