

Caspase-13 Antibody

Catalog No: #24097

Orders: order@signalwayantibody.comSupport: tech@signalwayantibody.com

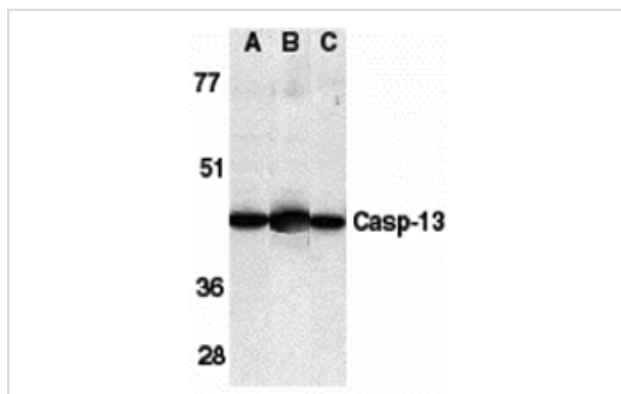
Description

Product Name	Caspase-13 Antibody
Host Species	Rabbit
Clonality	Polyclonal
Purification	Ion exchange chromatography purified
Applications	ELISA WB IHC
Species Reactivity	Hu Ms Rt
Immunogen Type	Peptide
Immunogen Description	Raised against a peptide corresponding to amino acids 91 to 105 of human caspase-13.
Target Name	Caspase-13
Other Names	Casp-13, ERICE
Accession No.	O75601
Uniprot	Q5E9C1
GeneID	338039;
Concentration	1mg/ml
Formulation	Supplied in PBS containing 0.02% sodium azide.
Storage	Can be stored at -20°C, stable for one year. As with all antibodies care should be taken to avoid repeated freeze thaw cycles. Antibodies should not be exposed to prolonged high temperatures.

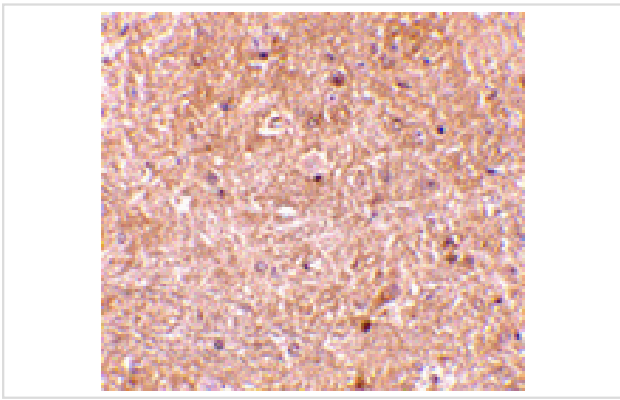
Application Details

Predicted MW: 43 kd

Images



Western blot analysis of caspase-13 in human HL60 cell lysate (A), mouse brain (B) and rat brain (C) tissue lysates with caspase-13 antibody at 1 ug/mL.



Immunohistochemistry of caspase-13 in mouse brain tissue with caspase-13 antibody at 10 ug/mL.

Background

Apoptosis is related to many diseases and induced by a family of cell death receptors and their ligands. Cell death is finally caused by members of the caspase family of proteases and caspase activated DNases. A novel member in the caspase family was recently identified and designated ERICE (for Evolutionarily Related Interleukin-1 beta Converting Enzyme) and caspase-13. Caspase-13 belongs to the ICE subfamily of caspases. Overexpression of caspase-13 induces apoptosis. Caspase-13 was activated by caspase-8, which is a key enzyme in death receptor induced apoptosis. Caspase-13 is expressed in a variety of human tissues and cell lines.

Note: This product is for in vitro research use only