

Ski Antibody

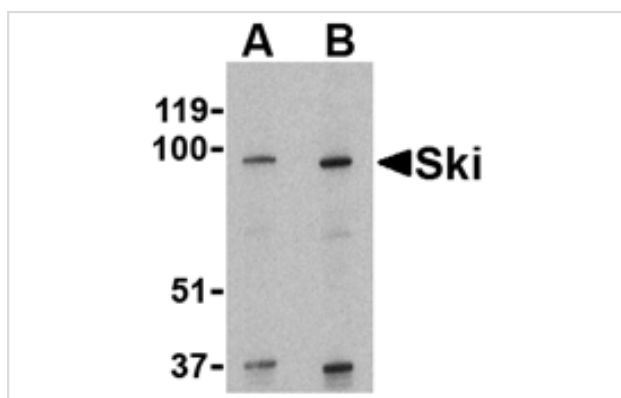
Catalog No: #24102

Orders: order@signalwayantibody.comSupport: tech@signalwayantibody.com

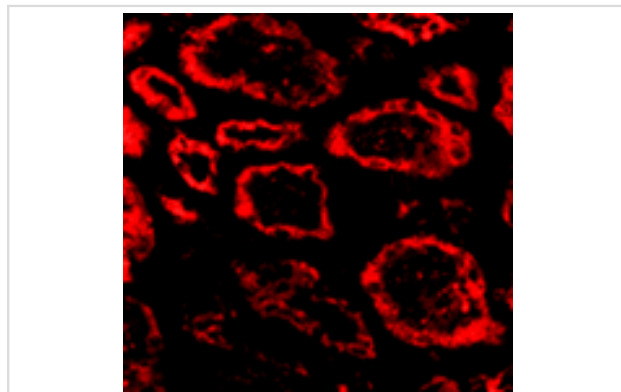
Description

Product Name	Ski Antibody
Host Species	Rabbit
Clonality	Polyclonal
Purification	Affinity chromatography purified via peptide column
Applications	ELISA WB IF
Species Reactivity	Hu
Immunogen Type	Peptide
Immunogen Description	Raised against a 14 amino acid peptide from near the amino terminus of human Ski.
Target Name	Ski
Other Names	c-ski, v-ski sarcoma viral oncogene homolog
Accession No.	P12755
Uniprot	P12755
GeneID	6497;
Concentration	1mg/ml
Formulation	Supplied in PBS containing 0.02% sodium azide.
Storage	Can be stored at -20°C, stable for one year. As with all antibodies care should be taken to avoid repeated freeze thaw cycles. Antibodies should not be exposed to prolonged high temperatures.

Images



Western blot analysis of Ski in human kidney tissue lysate with Ski antibody at (A) 1 and (B) 2 ug/mL.



Immunofluorescence of Ski in human kidney tissue with Ski antibody at 20 ug/mL.

Background

TGF-beta is a ubiquitously expressed cytokine that signals through the Smad protein family to regulate numerous cellular processes such as embryonic development and tumorigenesis. This signaling is negatively regulated by Ski, the mammalian homolog of the transforming protein of an avian retrovirus that induces oncogenic transformation of chicken embryo cells, and the related protein SnoN. Ski functions by binding to the Smad proteins and preventing their phosphorylation, thereby inhibiting their ability to bind DNA and activate the transcription of downstream genes. Ski will also bind to the Smad proteins specific to bone morphogenic proteins (BMPs) and block BMP signaling in mammalian cells.

Note: This product is for in vitro research use only