

Nephrin Antibody

Catalog No: #24104

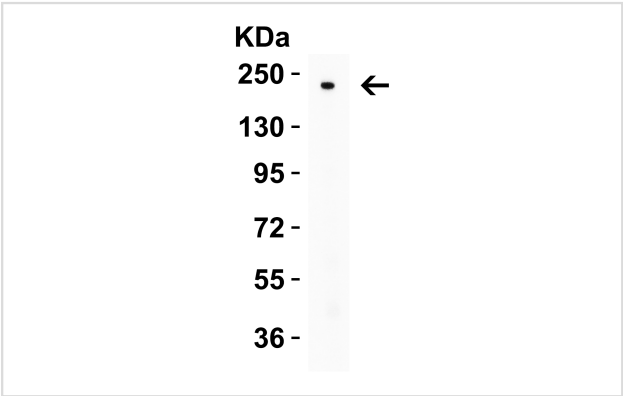


Orders: order@signalwayantibody.com
Support: tech@signalwayantibody.com

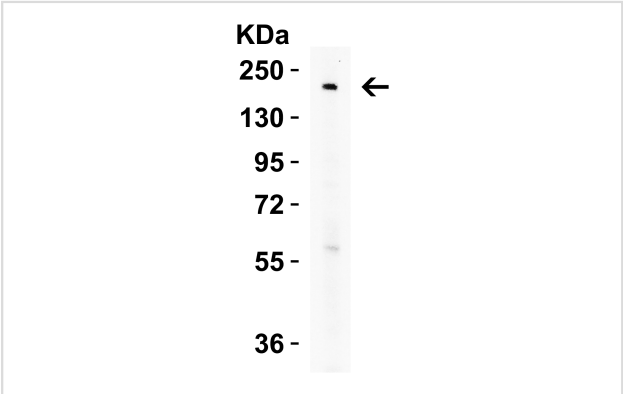
Description

Product Name	Nephrin Antibody
Host Species	Rabbit
Clonality	Polyclonal
Purification	Affinity chromatography purified via peptide column
Applications	ELISA WB IHC
Species Reactivity	Hu Ms Rt
Immunogen Type	Peptide
Immunogen Description	Raised against a 14 amino acid peptide from near the carboxy terminus of human Nephrin.
Target Name	Nephrin
Other Names	Nephrin, NPHN, NPHS1, Renal glomerulus-specific cell adhesion receptor
Accession No.	Swiss-Prot:O60500Gene ID:4868
Uniprot	O60500
GeneID	4868;
Concentration	1mg/ml
Formulation	Supplied in PBS containing 0.02% sodium azide.
Storage	Can be stored at -20°C, stable for one year. As with all antibodies care should be taken to avoid repeated freeze thaw cycles. Antibodies should not be exposed to prolonged high temperatures.

Images



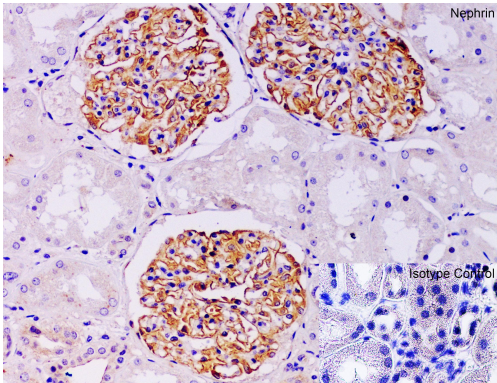
WB Validation in Human KidneyLoading: 15 ug of lysate
Antibodies: Nephrin, 2 ug/mL , 1 h incubation at RT in 5%
NFDm/TBST. Secondary: Goat Anti-Rabbit IgG HRP
conjugate at 1:10000 dilution.



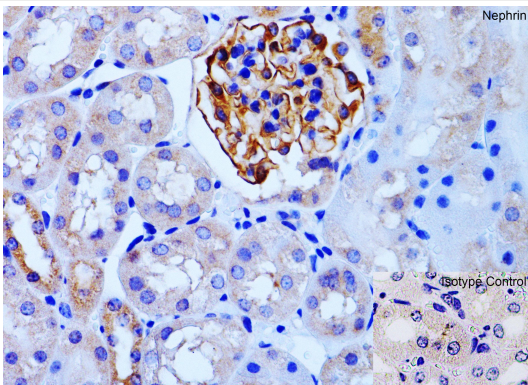
WB Validation in Mouse KidneyLoading: 15 ug of lysate
Antibodies: Nephrin, 2 ug/mL , 1 h incubation at RT in 5%
NFDm/TBST. Secondary: Goat Anti-Rabbit IgG HRP
conjugate at 1:10000 dilution.

KDa
250 -
130 - ←
95 -
72 -
55 -
36 -

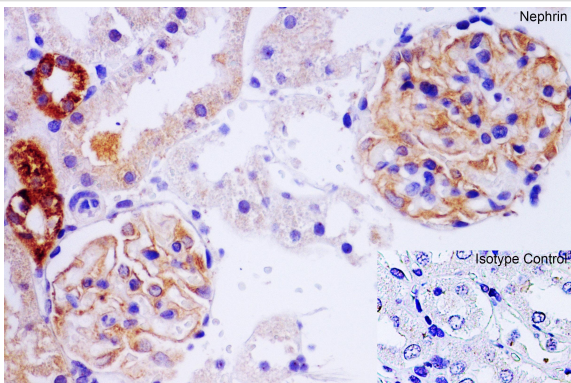
WB Validation in Rat Brain Loading: 15 ug of lysate Antibodies: Nephtrin, 2 ug/mL , 1 h incubation at RT in 5% NFDm/TBST. Secondary: Goat Anti-Rabbit IgG HRP conjugate at 1:10000 dilution.



Immunohistochemistry Validation of Nephtrin in Human Kidney
Immunohistochemical analysis of paraffin-embedded human kidney tissue using anti-Nephtrin antibody at 1 ug/ml. Tissue was fixed with formaldehyde and blocked with 10% serum for 1 h at RT; antigen retrieval was by heat mediation with a citrate buffer (pH6). Samples were incubated with primary antibody overnight at 4°C. A goat anti-rabbit IgG H&L (HRP) at 1/250 was used as secondary. Counter stained with Hematoxylin.



Immunohistochemistry Validation of Nephtrin in Mouse Kidney
Immunohistochemical analysis of paraffin-embedded mouse kidney tissue using anti-Nephtrin antibody at 1 ug/ml. Tissue was fixed with formaldehyde and blocked with 10% serum for 1 h at RT; antigen retrieval was by heat mediation with a citrate buffer (pH6). Samples were incubated with primary antibody overnight at 4°C. A goat anti-rabbit IgG H&L (HRP) at 1/250 was used as secondary. Counter stained with Hematoxylin.



Immunohistochemistry Validation of Nephtrin in Rat Kidney
Immunohistochemical analysis of paraffin-embedded rat kidney tissue using anti-Nephtrin antibody at 1 ug/ml. Tissue was fixed with formaldehyde and blocked with 10% serum for 1 h at RT; antigen retrieval was by heat mediation with a citrate buffer (pH6). Samples were incubated with primary antibody overnight at 4°C. A goat anti-rabbit IgG H&L (HRP) at 1/250 was used as secondary. Counter stained with Hematoxylin.

Background

Nephtrin is strongly expressed in renal glomeruli and is a member of the immunoglobulin family of cell adhesion molecules. Mutations in the Nephtrin gene result in congenital nephrotic syndrome, an autosomal-recessive disorder characterized by massive proteinuria in utero and nephrosis at birth. Renal glomeruli allow normal kidneys to filter plasma so that it is very pure. Nephtrin is expressed in the podocyte slit-diaphragm of the renal glomeruli in a manner that suggests that Nephtrin molecules homodimerize in an anti-parallel fashion similar to cadherin interactions in adherens junctions. Thus, Nephtrin may constitute the entire extracellular structure of the slit-diaphragm.

Note: This product is for in vitro research use only