

## DcR1 Antibody

Catalog No: #24113

Orders: [order@signalwayantibody.com](mailto:order@signalwayantibody.com)Support: [tech@signalwayantibody.com](mailto:tech@signalwayantibody.com)

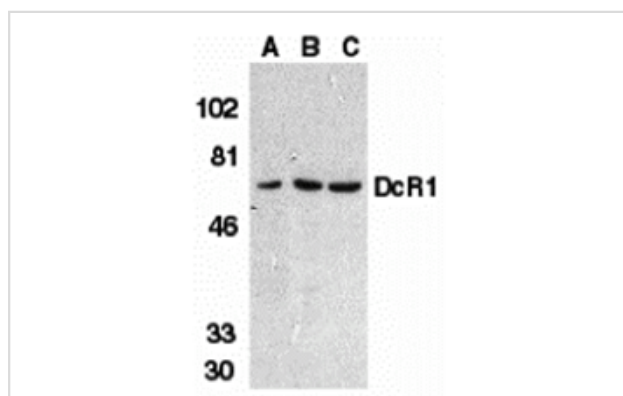
## Description

Product Name	DcR1 Antibody
Host Species	Rabbit
Clonality	Polyclonal
Purification	DcR1 Antibody is DEAE purified.
Applications	ELISA WB IF
Species Reactivity	Hu Ms Rt
Immunogen Type	Peptide
Immunogen Description	Raised against a peptide corresponding to amino acids in the extracellular domain of human DcR1 precursor.
Target Name	DcR1
Other Names	TRAIL-R3, TRID, LIT
Accession No.	Swiss-Prot:O14798Gene ID:8794
Uniprot	O14798
GeneID	8794;
Concentration	1mg/ml
Formulation	Supplied in PBS containing 0.02% sodium azide.
Storage	Antibody can be stored at 4°C up to one year. Antibodies should not be exposed to prolonged high temperatures.

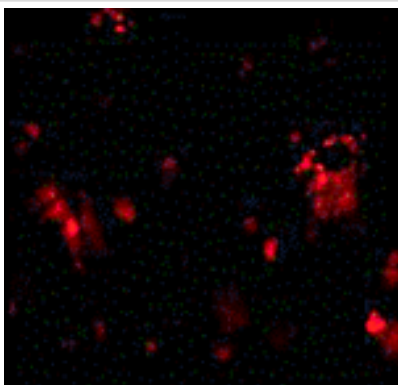
## Application Details

Predicted MW: 65 kd

## Images



Western blot analysis of DcR1 in HeLa cell (A), mouse (B) and rat (C) liver tissue lysates with DcR1 antibody at 1 ug/mL.



Immunofluorescence of DcR1 in rat liver tissue with DcR1 antibody at 10 ug/mL.

## Background

Apoptosis is induced by certain cytokines including TNF and Fas ligand in the TNF family through their death domain containing receptors. TRAIL/Apo2L is a new member of the TNF family and induces apoptosis of a variety of tumor cell lines. DR4 and DR5 are the recently identified functional receptors for TRAIL. Two decoy receptors for TRAIL have been identified and designated DcR1/TRID/TRAIL-R3/LIT and DcR2/TRAIL-R4/TRUNDD. DcR1 has extracellular TRAIL-binding domain but lacks intracellular signaling domain. It is a glycosphospholipid-anchored cell surface protein. DcR1 transcripts are expressed in many normal human tissues but not in most cancer cell lines. Overexpression of DcR1 did not induce apoptosis, but attenuated TRAIL-induced apoptosis.

Note: This product is for in vitro research use only