

DC-SIGN Antibody

Catalog No: #24126

Orders: order@signalwayantibody.comSupport: tech@signalwayantibody.com

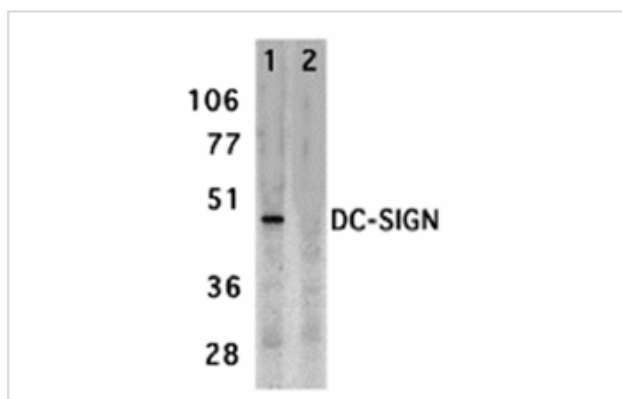
Description

Product Name	DC-SIGN Antibody
Host Species	Rabbit
Clonality	Polyclonal
Purification	Affinity chromatography purified via peptide column
Applications	ELISA WB IHC
Species Reactivity	Hu
Immunogen Type	Peptide
Immunogen Description	Raised against a synthetic peptide corresponding to amino acids near the center of human DC-SIGN.
Target Name	DC-SIGN
Accession No.	Q9NNX6
Uniprot	Q9NNX6
GeneID	30835;
Concentration	1mg/ml
Formulation	Supplied in PBS containing 0.02% sodium azide.
Storage	Can be stored at -20°C, stable for one year. As with all antibodies care should be taken to avoid repeated freeze thaw cycles. Antibodies should not be exposed to prolonged high temperatures.

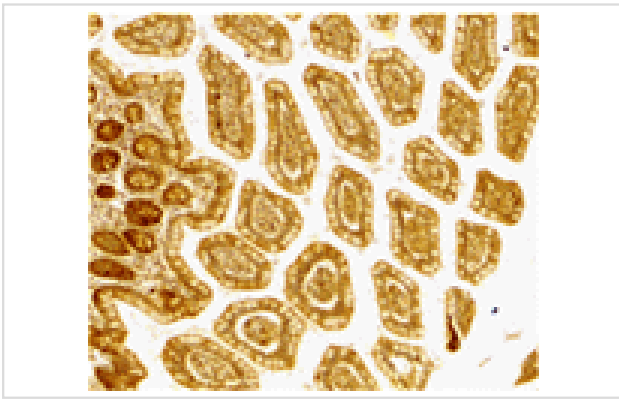
Application Details

Predicted MW: 44 kd

Images



Western blot analysis of DC-SIGN expression in human placenta tissue lysate in the absence (lane 1) and presence (lane 2) of blocking peptide with DC-SIGN antibody at 2 ug/ml.



Immunohistochemistry of DC-SIGN in human small intestine tissue with DC-SIGN antibody at 10 ug/mL.

Background

Dendritic cells (DCs) that control immune responses were recently found to capture and transport HIV from the mucosal area to remote lymph nodes, where DCs hand over HIV to CD4+ T lymphocytes. DCs also amplify the amount of virus and extend the duration of viral infectivity. Multiple strains of HIV-1, HIV-2 and SIV bind to DCs via DC-SIGN. ICAM-3 is the natural ligand for DC-SIGN. A DC-SIGN homologue (termed DC-SIGNR, L-SIGN, and DC-SIGN2) was identified recently. DC-SIGN forms a novel gene family with DC-SIGNR and many alternatively spliced isoforms of DC-SIGN and DC-SIGNR. The expression of DC-SIGN was found in mucosal tissues including placenta, small intestine, and rectum.

Note: This product is for in vitro research use only