

BCMA Antibody

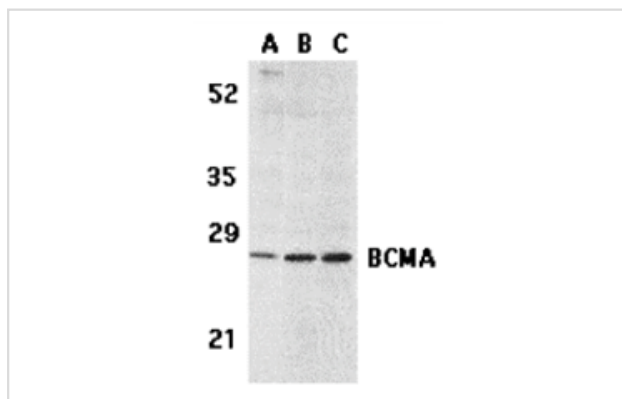
Catalog No: #24132

Orders: order@signalwayantibody.comSupport: tech@signalwayantibody.com

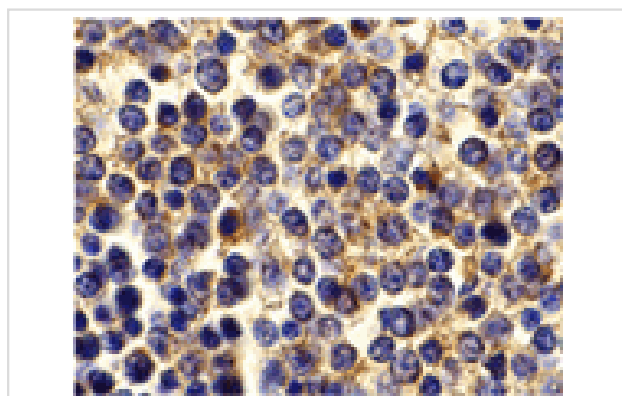
Description

Product Name	BCMA Antibody
Host Species	Rabbit
Clonality	Polyclonal
Purification	Affinity chromatography purified via peptide column
Applications	ELISA WB IHC
Species Reactivity	Hu
Immunogen Type	Peptide
Immunogen Description	Raised against a synthetic peptide mapping at the carboxy terminus of human BCMA.
Target Name	BCMA
Accession No.	Swiss-Prot:Q02223Gene ID:608
Uniprot	Q02223
GeneID	608;
Concentration	1mg/ml
Formulation	Supplied in PBS containing 0.02% sodium azide.
Storage	Can be stored at -20°C, stable for one year. As with all antibodies care should be taken to avoid repeated freeze thaw cycles. Antibodies should not be exposed to prolonged high temperatures.

Images



Western blot analysis of BCMA in human spleen (A) tissue lysate, K562 (B), and U937 (C) cell lysates with BCMA antibody at 5 ug/mL.



Immunohistochemistry of BCMA in human spleen cells with BCMA antibody at 10 ug/mL.

Background

Members in the TNF superfamily regulate immune responses and induce apoptosis. Two novel members in the TNF family were recently identified and designated BAFF/BLyS/TALL-1/THANK/zTNF4 and April/TALL-2, respectively. BAFF was characterized as a B cell activator since it induced B cell proliferation and immunoglobulin secretion. April regulates immunological and non-immunological cell growth. Three receptors, BCMA (for B cell maturation protein), TACI, and BAFF-R, for BAFF were recently identified. BCMA, like TACI, binds BAFF and April. BAFF and its receptors induce B cell development and survival, activate NF- κ B and c-jun N-terminal kinase, and are involved in B cell associated autoimmune diseases.

Note: This product is for in vitro research use only