

APOE Rabbit Polyclonal Antibody

Catalog No: #53027

Package Size: #53027-1 50ul #53027-2 100ul

Orders: order@signalwayantibody.com

Support: tech@signalwayantibody.com

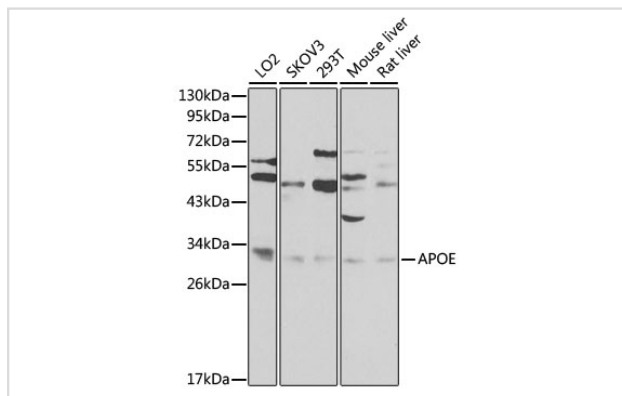
Description

Product Name	APOE Rabbit Polyclonal Antibody
Host Species	Rabbit
Clonality	Polyclonal
Isotype	IgG
Purification	Affinity purification
Applications	WB,IHC,IF
Species Reactivity	Human,Mouse,Rat
Immunogen Description	A synthetic peptide of human APOE (NP_000032.1).
Other Names	APOE;AD2;APO-E;ApoE4;LDLCQ5;LPG;ApoE
Accession No.	Swiss Prot:P02649GeneID:348
Uniprot	P02649
Calculated MW	36kDa
SDS-PAGE MW	34kDa
Formulation	Buffer: PBS with 0.02% sodium azide,50% glycerol,pH7.3.
Storage	Store at -20°C. Avoid freeze / thaw cycles.

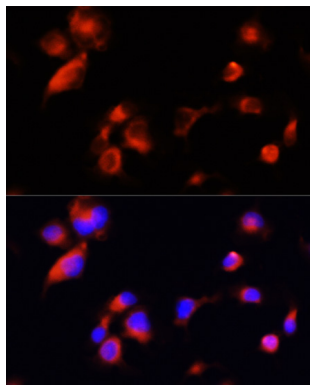
Application Details

WB □ 1:500 - 1:2000 IHC □ 1:50 - 1:200 IF □ 1:50 - 1:200

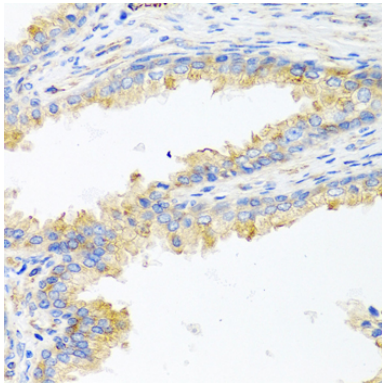
Images



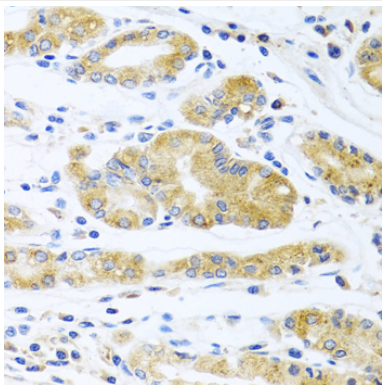
Western blot analysis of extracts of various cell lines, using ApoE at 1:1000 dilution.



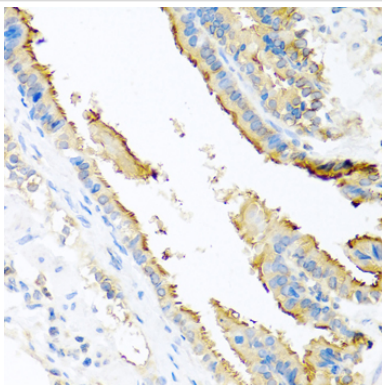
Immunofluorescence analysis of A431 cells using ApoE at dilution of 1:100 (40x lens). Blue: DAPI for nuclear staining.



Immunohistochemistry of paraffin-embedded human prostate using ApoE at dilution of 1:100 (40x lens).



Immunohistochemistry of paraffin-embedded human stomach using ApoE at dilution of 1:100 (40x lens).



Immunohistochemistry of paraffin-embedded mouse lung using ApoE at dilution of 1:100 (40x lens).

Background

The protein encoded by this gene is a major apoprotein of the chylomicron. It binds to a specific liver and peripheral cell receptor, and is essential for the normal catabolism of triglyceride-rich lipoprotein constituents. This gene maps to chromosome 19 in a cluster with the related apolipoprotein C1 and C2 genes. Mutations in this gene result in familial dysbetalipoproteinemia, or type III hyperlipoproteinemia (HLP III), in which increased plasma cholesterol and triglycerides are the consequence of impaired clearance of chylomicron and VLDL remnants.

Note: This product is for in vitro research use only