

SLC26A6 Rabbit Polyclonal Antibody

Catalog No: #29692

Package Size: #29692-1 50ul #29692-2 100ul

Orders: order@signalwayantibody.com

Support: tech@signalwayantibody.com

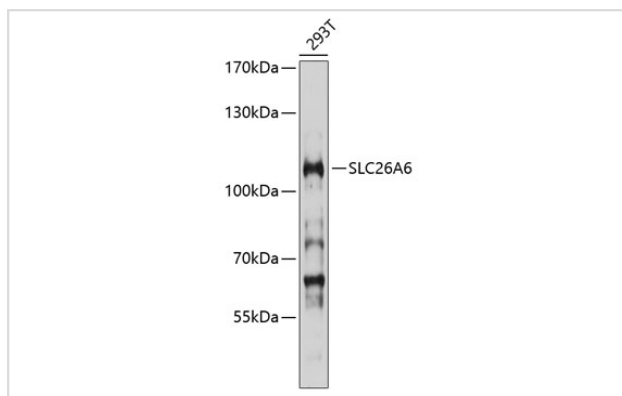
Description

Product Name	SLC26A6 Rabbit Polyclonal Antibody
Host Species	Rabbit
Clonality	Polyclonal
Isotype	IgG
Purification	Affinity purification
Applications	WB
Species Reactivity	Human,Mouse
Immunogen Description	Recombinant fusion protein of human SLC26A6 (NP_599025.2).
Other Names	SLC26A6
Accession No.	Swiss Prot:Q9BXS9GeneID:65010
Calculated MW	73kDa/76kDa/79kDa/80kDa/82kDa
SDS-PAGE MW	110kDa
Formulation	Buffer: PBS with 0.02% sodium azide,50% glycerol,pH7.3.
Storage	Store at -20°C. Avoid freeze / thaw cycles.

Application Details

WB □ 1:500 - 1:2000

Images



Western blot analysis of extracts of 293T cells, using SLC26A6 at 1:1000 dilution.

Background

This gene belongs to the solute carrier 26 family, whose members encode anion transporter proteins. This particular family member encodes a protein involved in transporting chloride, oxalate, sulfate and bicarbonate. Alternatively spliced transcript variants encoding distinct isoforms have been described.

Note: This product is for in vitro research use only