

## KappaB ras Antibody

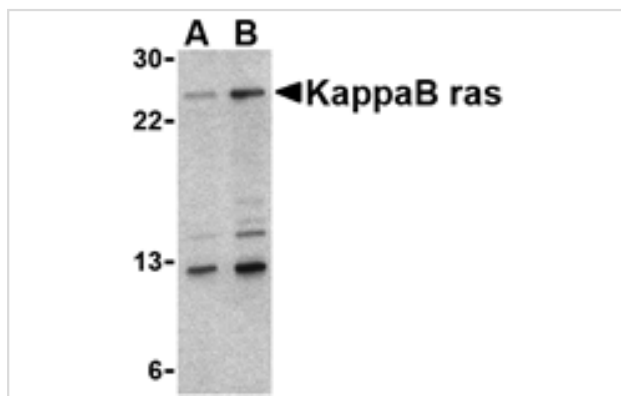
Catalog No: #24150

Orders: [order@signalwayantibody.com](mailto:order@signalwayantibody.com)Support: [tech@signalwayantibody.com](mailto:tech@signalwayantibody.com)

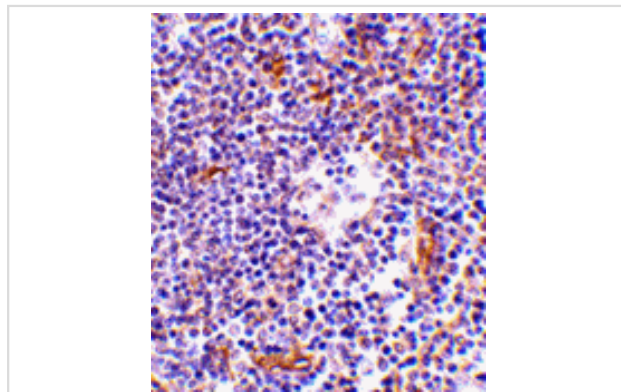
## Description

Product Name	KappaB ras Antibody
Host Species	Rabbit
Clonality	Polyclonal
Purification	Affinity chromatography purified via peptide column
Applications	ELISA WB IHC
Species Reactivity	Hu Ms Rt
Immunogen Type	Peptide
Immunogen Description	Raised against a 18 amino acid peptide from near the center of human KappaB ras 1.
Target Name	KappaB ras
Other Names	KappaB ras, NF-kappaB inhibitor-interacting Ras like protein, kappaB-ras, NKIRAS
Accession No.	Swiss-Prot:Q9NYS0Gene ID:28512
Uniprot	Q9NYS0
GeneID	28512;
Concentration	1mg/ml
Formulation	Supplied in PBS containing 0.02% sodium azide.
Storage	Can be stored at -20°C, stable for one year. As with all antibodies care should be taken to avoid repeated freeze thaw cycles. Antibodies should not be exposed to prolonged high temperatures.

## Images



Western blot analysis of KappaB ras in 293 cell lysate with KappaB ras antibody at (A) 2 and (B) 4 ug/mL.



Immunohistochemistry of KappaB ras in human lymph node tissue with KappaB ras antibody at 1 ug/mL.

## Background

---

KappaB ras-1 ( $\kappa$ B-ras-1) and kappaB-ras-2 are two small proteins that similar to Ras-like small GTPases that associate with I $\kappa$ B (I $\kappa$ B), an inhibitor of the transcription factor NF- $\kappa$ B. I $\kappa$ B exists in two homologous forms, I $\kappa$ B-alpha and I $\kappa$ B-beta, although I $\kappa$ B-beta contains a unique 47-amino acid region within its ankyrin domain. While inactive I $\kappa$ B-alpha-NF- $\kappa$ B complexes can shuttle in and out of the nucleus, I $\kappa$ B-beta-NF- $\kappa$ B complexes are retained exclusively in the cytoplasm. It is suggested that kappaB-ras proteins preferentially bind to the I $\kappa$ B-beta form through this unique insert within the ankyrin region, thus modulating the cellular location of I $\kappa$ B-beta and regulating the rate of degradation of I $\kappa$ B-beta. This antibody detects both kappaB-ras1 and kappaB-ras2.

---

Note: This product is for in vitro research use only