

## TIM-3/HAVCR2 Rabbit Polyclonal Antibody

Catalog No: #53604

Package Size: #53604-1 50ul #53604-2 100ul

Orders: order@signalwayantibody.com

Support: tech@signalwayantibody.com

## Description

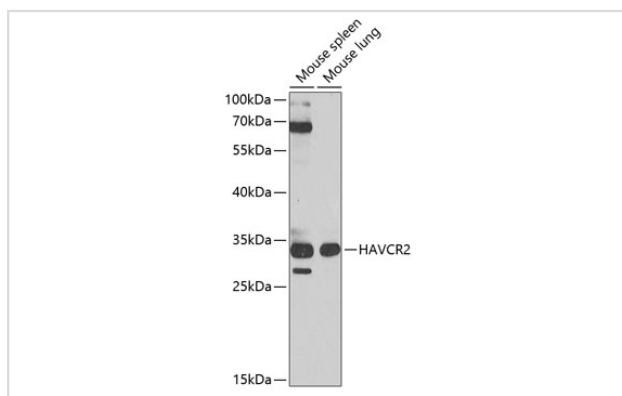
Product Name	TIM-3/HAVCR2 Rabbit Polyclonal Antibody
Host Species	Rabbit
Clonality	Polyclonal
Isotype	IgG
Purification	Affinity purification
Applications	WB,IF
Species Reactivity	Human,Mouse
Immunogen Description	A synthetic peptide of human TIM-3/HAVCR2 (NP_116171.3).
Other Names	HAVCR2;CD366;HAVcr-2;KIM-3;TIM3;TIMD-3;TIMD3;Tim-3
Accession No.	Swiss Prot:Q8TDQ0GeneID:84868
Uniprot	Q8TDQ0
Calculated MW	33kDa
SDS-PAGE MW	45-70kDa,33kDa
Formulation	Buffer: PBS with 0.02% sodium azide,50% glycerol,pH7.3.
Storage	Store at -20°C. Avoid freeze / thaw cycles.

## Application Details

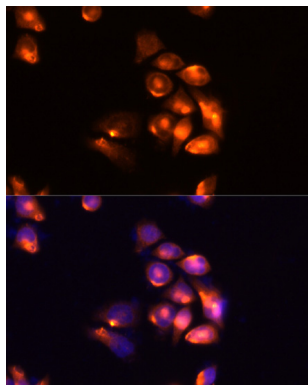
WB □ 1:500 - 1:2000

IF □ 1:50 - 1:200

## Images



Western blot analysis of extracts of various cell lines, using TIM-3/HAVCR2 at 1:1000 dilution.



Immunofluorescence analysis of HeLa cells using TIM-3/HAVCR2 at dilution of 1:100 (40x lens). Blue: DAPI for nuclear staining.

## Background

The protein encoded by this gene belongs to the immunoglobulin superfamily, and TIM family of proteins. CD4-positive T helper lymphocytes can be divided into types 1 (Th1) and 2 (Th2) on the basis of their cytokine secretion patterns. Th1 cells are involved in cell-mediated immunity to intracellular pathogens and delayed-type hypersensitivity reactions, whereas, Th2 cells are involved in the control of extracellular helminthic infections and the promotion of atopic and allergic diseases. This protein is a Th1-specific cell surface protein that regulates macrophage activation, and inhibits Th1-mediated auto- and alloimmune responses, and promotes immunological tolerance.

Note: This product is for in vitro research use only